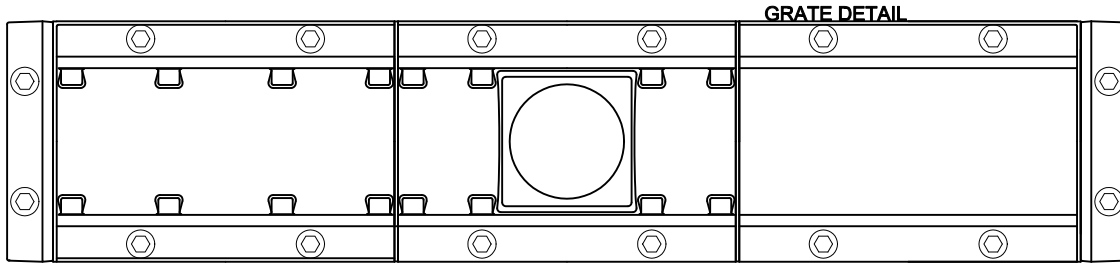
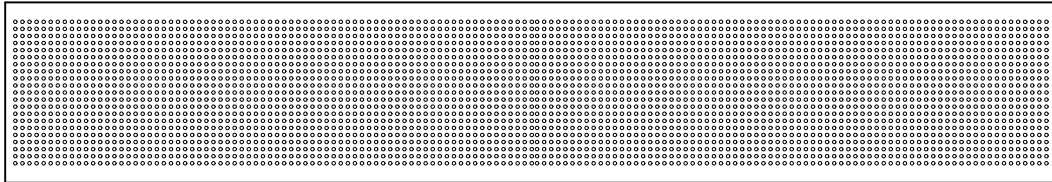


TRENCH DRAIN

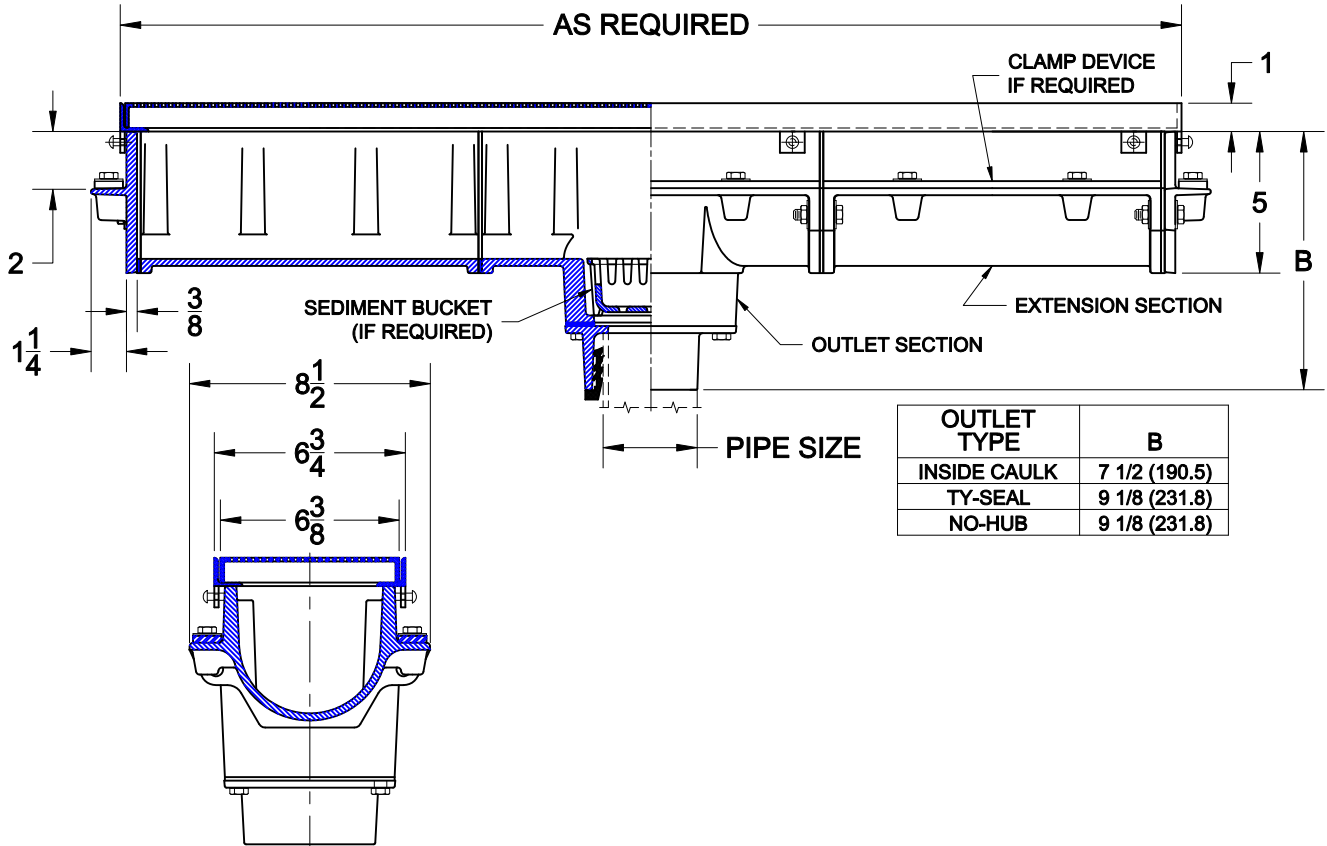


2950-206

CAST IRON MULTIPLE SECTION TRENCH DRAIN WITH STAINLESS STEEL
TYPE 304 PERFORATED GRATE (1/8" DIA. PERFORATIONS ON 1/4" CENTERS)



OUTLET SECTION SHOWN W/ GRATE REMOVED



OUTLET TYPE	B
INSIDE CAULK	7 1/2 (190.5)
TY-SEAL	9 1/8 (231.8)
NO-HUB	9 1/8 (231.8)

OPTIONS

Cat. No.	Pipe Size	Wt. Lbs.	Suffix	Description
<input type="checkbox"/> 2953-206	3	30.0	<input type="checkbox"/> TY	TY-SEAL OUTLET
<input type="checkbox"/> 2954-206	4	31.0	<input type="checkbox"/> NH	NO-HUB OUTLET
			<input type="checkbox"/> IC	INSIDE CAULK OUTLET
			<input type="checkbox"/> 27	SEDIMENT BUCKET
			<input type="checkbox"/> 61	A.R.E. EPOXY COATED BODY

AutoCad.dwg