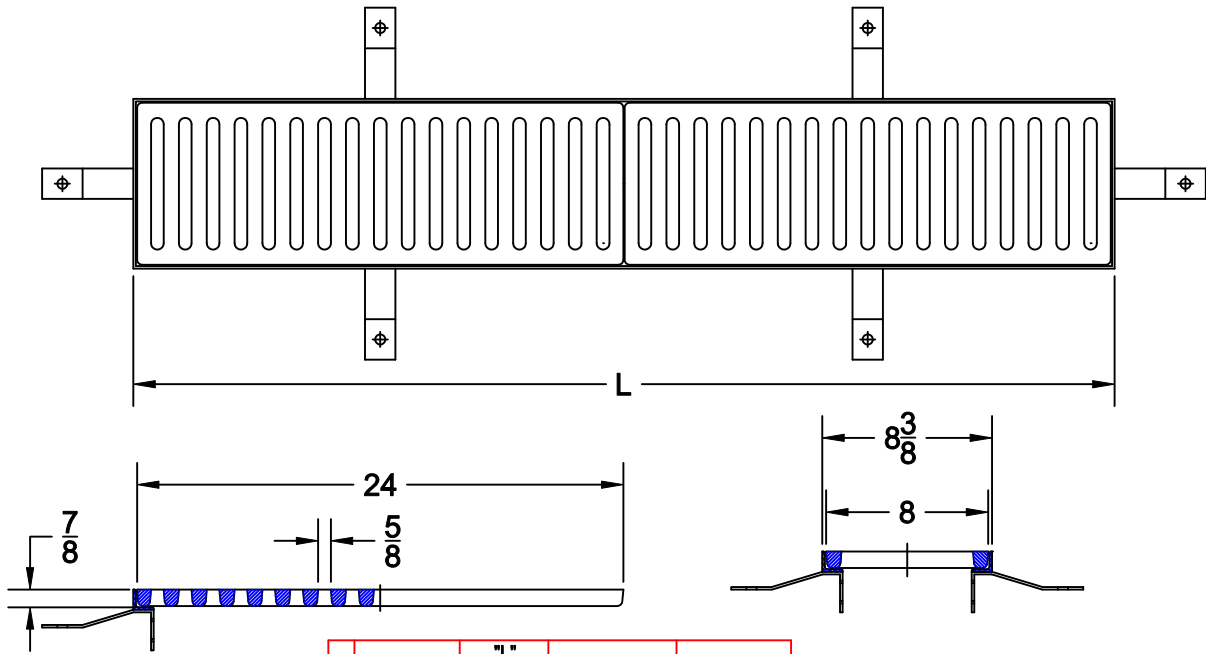


TRENCH DRAINS

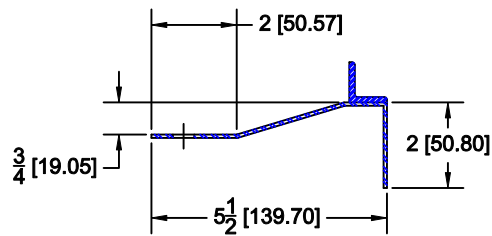


2908-D

TRENCH DRAIN WITH FABRICATED STEEL FRAME, DUCTILE IRON GRATES AND ANCHOR LUGS.



✓ CATALOG NUMBER	"L" FRAME LENGTH	QUANTITY OF ANCHORS	QUANTITY OF GRATES
2908-D2	24 1/8	4	1
2908-D4	48 1/8	8	2
2908-D6	72 1/8	12	3
2908-D8	96 1/8	16	4
2908-D10	120 1/8	20	5



ANCHOR LUG DETAIL