

TRENCH DRAINS



2902-ADA

TRENCH DRAIN WITH DUCTILE IRON GRATES AND PAINTED STEEL FRAME

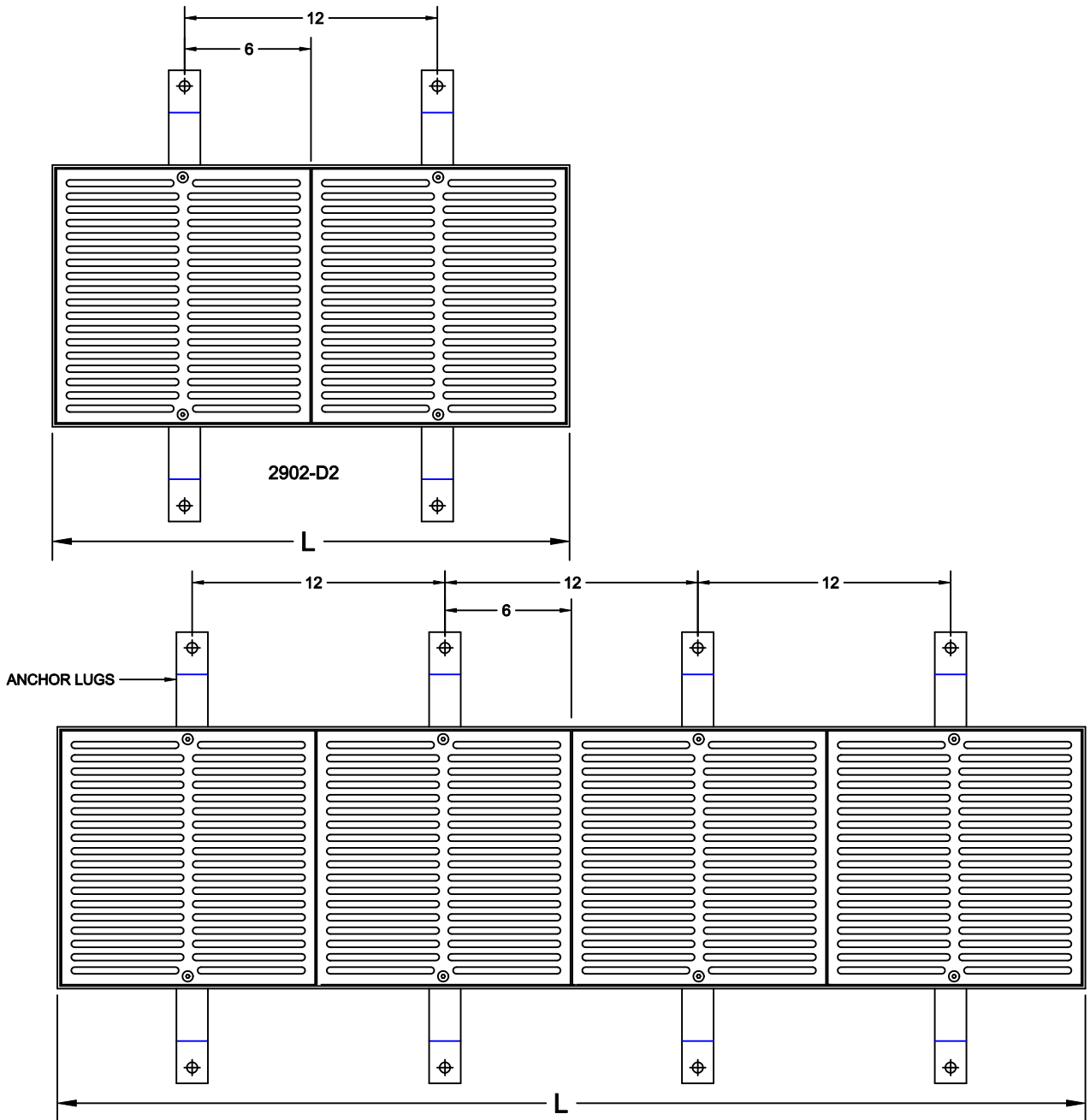
Approval Date

Customer Approval

Job Location

Job Name

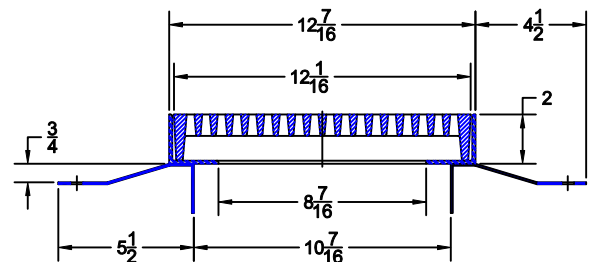
Wade Division / Tyler Pipe Assumes No Responsibility For Superseded or Voided Data. Dimensional Data (Inches/mm) are Subject to Manufacturers Tolerance and Change Without Notice.



EACH GRATE FREE AREA = 59.4 SQ.IN

CATALOG NUMBER	"L" FRAME LENGTH	QUANTITY OF ANCHORS REQUIRED	QUANTITY OF GRATES REQUIRED
2902-D2	24 5/8	4	2
2902-D3	36 7/8	4	2
2902-D4	48 7/8	8	4
2902-D5*	61	10	5
2902-D6	73	12	6
2902-D7	85 1/4	16	8
2902-D8	97 1/4	16	8

* 2902-D3, D5 & D7 ANCHOR LUGS START WITH LUGS AT CENTERLINE



AutoCad.dwg