

LARGE KETTLE DRAIN



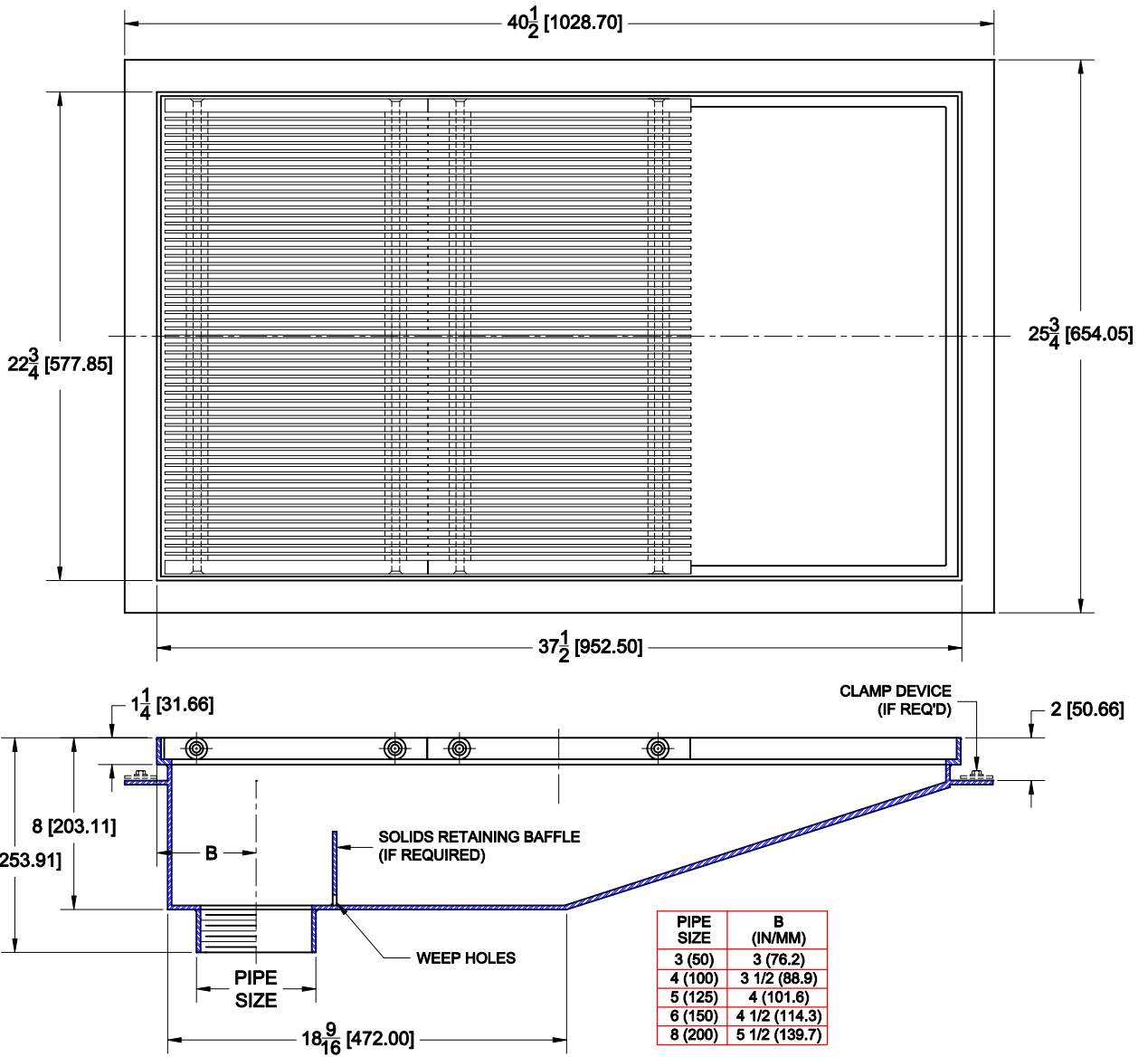
2890-LC-SS-ADA-1/3

FABRICATED STAINLESS STEEL KETTLE DRAIN WITH TWO LOOSE SET ADA BAR GRATES AND OFFSET NO-HUB BOTTOM OUTLET.
1/8 (3) BARS ON 3/8 (10) CENTERS

Approval Date

Customer Approval

Wade Division / Tyler Pipe Assumes No Responsibility For Superseded or Voided Data



Job Location

Dimensional Data (Inches/mm) are Subject to Manufacturers Tolerance and Change Without Notice.

Job Name

OPTIONS

Cat. No.	Pipe Size	Wt. Lbs.	Suffix	Description
<input type="checkbox"/> 2893-LC-SS-ADA-1/3	3 (50)	112.0	<input type="checkbox"/> 5	VANDAL PROOF (SECURED) GRATE
<input type="checkbox"/> 2894-LC-SS-ADA-1/3	4 (100)	113.0	<input type="checkbox"/> 9	SECONDARY DOME BOTTOM STRAINER
<input type="checkbox"/> 2895-LC-SS-ADA-1/3	5 (125)	114.0	<input type="checkbox"/> 26	CLAMP DEVICE
<input type="checkbox"/> 2896-LC-SS-ADA-1/3	6 (150)	114.0	218	SOLIDS RETAINING BAFFLE
<input type="checkbox"/> 2898-LC-SS-ADA-1/3	8 (200)	115.0		

AutoCad.dwg