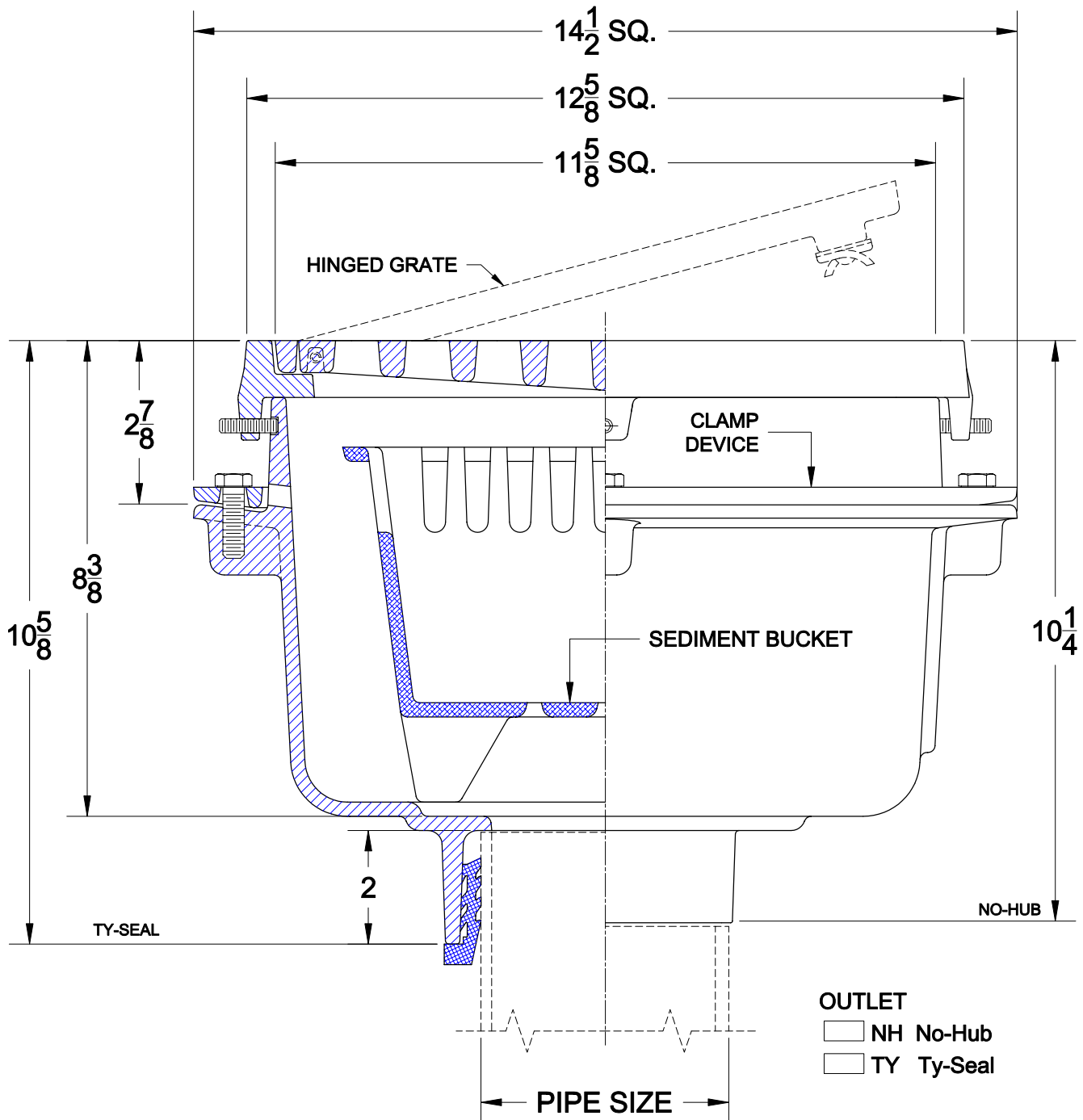


# FLOOR DRAIN



2370-14-19-27

Cast iron floor drain with, flange, sediment bucket, hinged locking grate, 1/2" trap primer tapping and bottom outlet.



### OPTIONS

Cat. No.	Pipe Size	Wt. Lbs.	Suffix	Description
<input type="checkbox"/> 2373-14-19-27	3	97.0	<input type="checkbox"/> 1	Satin Nickel Bronze Veneer Top
<input type="checkbox"/> 2374-14-19-27	4	97.0	<input type="checkbox"/> 5	Vandal Proof
<input type="checkbox"/> 2376-14-19-27	6	97.0	<input type="checkbox"/> 26	Clamp Device
			<input type="checkbox"/> 123	S/S Mesh Lined Sediment Bucket