

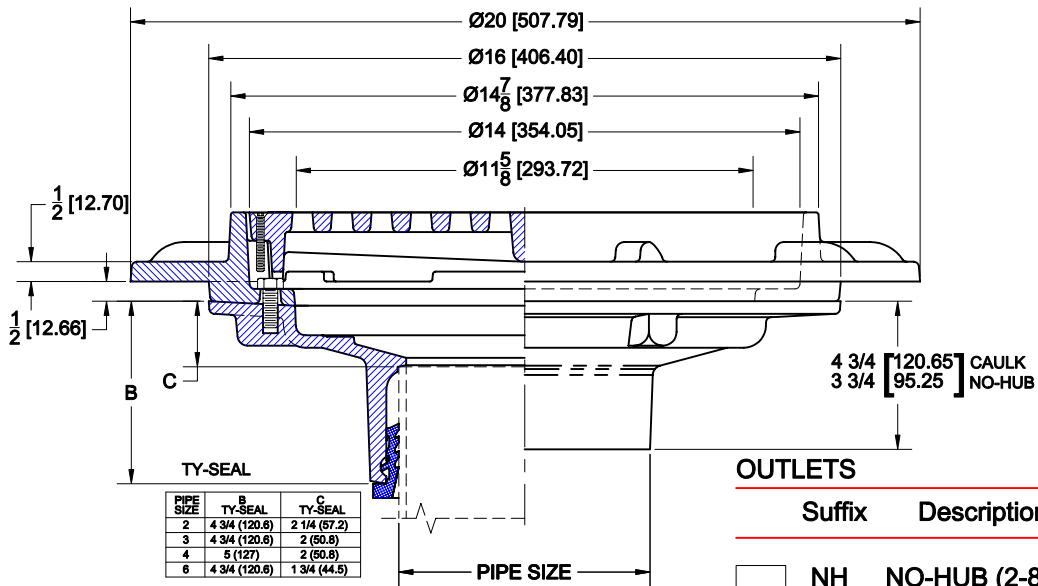
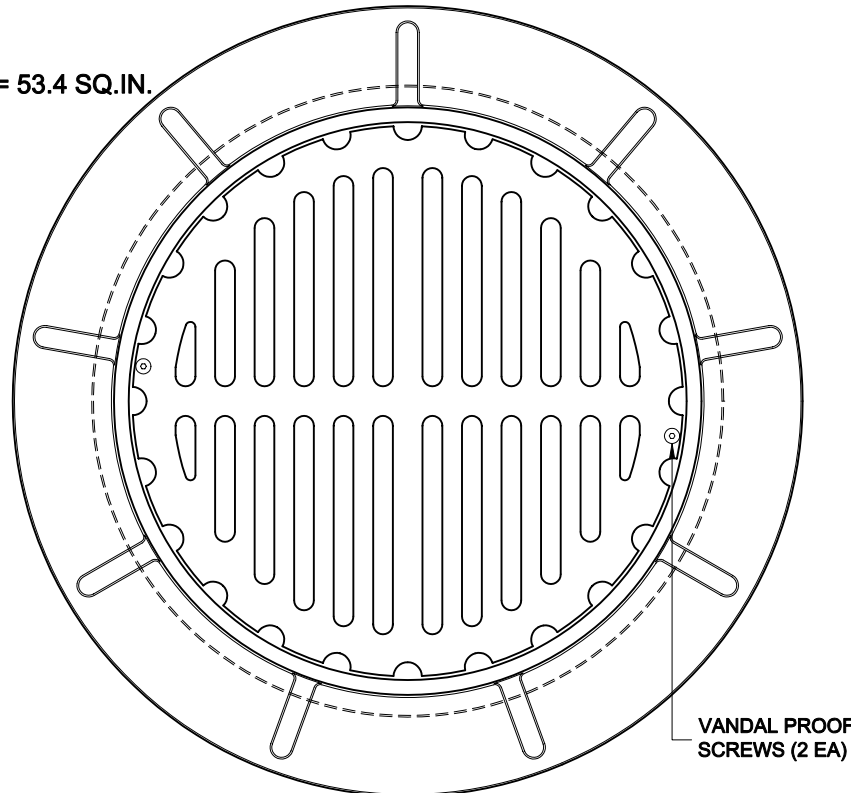
# LARGE FLOOR DRAIN



## 1400-PG-5

CAST IRON PARKING GARAGE FLOOR DRAIN WITH INTEGRAL CLAMPING COLLAR, HEAVY DUTY SUPPORT FLANGE, DUCTILE IRON VANDAL PROOF TRACTOR GRATE AND 1/2" TRAP PRIMER TAP (PLUGGED)

GRATE FREE AREA = 53.4 SQ.IN.



ANSI LOAD CLASS - SD SPECIAL DUTY (OVER 10,000 LBS)

### OPTIONS

Suffix	Description
NH	NO-HUB (2-8")
TY	TY-SEAL (3-8")
IC	INSIDE CAULK (3,4,6")

Cat. No.	Pipe Size	Wt. Lbs.	Suffix	Description
<input type="checkbox"/> 1402-PG-5	2 (50)	86.0	<input type="checkbox"/> 1	SATIN NICKEL BRONZE VENEER GRATE
<input type="checkbox"/> 1403-PG-5	3 (75)	86.0	<input type="checkbox"/> 5	VANDAL PROOF GRATE
<input type="checkbox"/> 1404-PG-5	4 (100)	86.0	<input type="checkbox"/> 8	FLAT SECONDARY STRAINER
<input type="checkbox"/> 1406-PG-5	6 (150)	86.0	<input type="checkbox"/> 23	GRATE RISER (3" HIGH)
<input type="checkbox"/> 1408-PG-5	8 (200)	87.0	<input type="checkbox"/> 27	SEDIMENT BUCKET
<input type="checkbox"/> 1409-PG-5	10 (250)	87.0	<input type="checkbox"/> 31	BACKWATER VALVE (2,3,4")

AutoCad.dwg