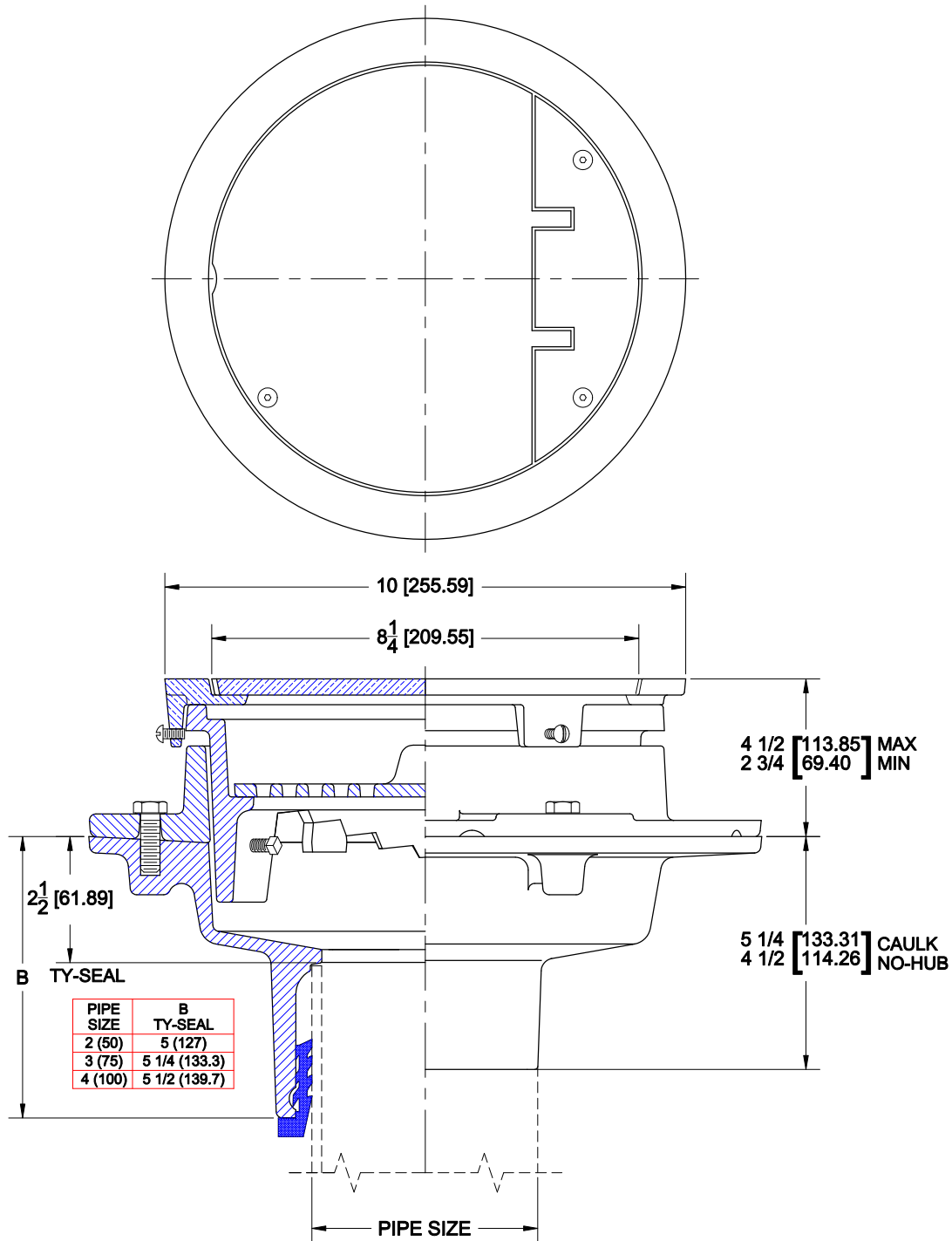


ADJUSTABLE FLOOR DRAIN



1340,1,8,14,18,19

Cast iron floor drain with adjustable top, flange, secondary strainer, bottom outlet and satin finish nickel bronze top with solid hinged grate and secondary strainer



ANSI Load Class - LD (Light Duty - Under 2,000 Lbs)

OPTIONS

Cat. No.	Pipe Size	Wt. Lbs.	Suffix	Description
<input type="checkbox"/> 1342,1,8,14,18,19	2 (50)	39.0	<input type="checkbox"/> 23	Grate Riser (Ea 1 1/2" High)
<input type="checkbox"/> 1343,1,8,14,18,19	3 (75)	39.0	<input type="checkbox"/> 31	Backwater Valve
<input type="checkbox"/> 1344,1,8,14,18,19	4 (100)	39.0	<input type="checkbox"/> 39	Galvanized Iron Parts

OUTLETS

(NH) NO-HUB (TY) TY-SEAL (IC) INSIDE CAULK

AutoCad.dwg