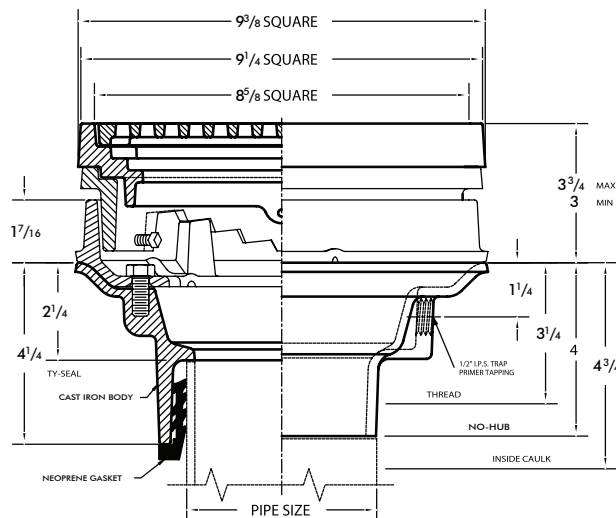
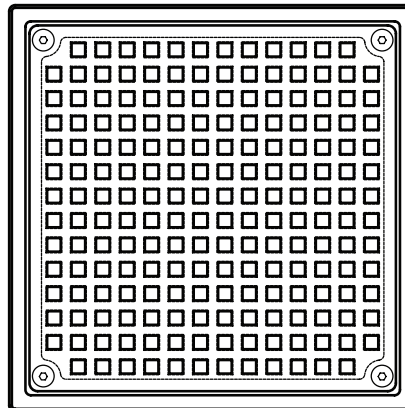


Adjustable Square Top Floor Drain



2100 Painted cast iron floor drain with flange, clamping collar, seepage openings, square top with ductile iron heel proof grate, adjustable collar, plugged 1/2" trap primer connection and bottom outlet.
 ANSI load class XH - Extra Heavy Duty (7,500-10,000 Lbs.)
 Grate Free Area = 18.9 Sq.In.



Cat. No.	Pipe Size	Flow Rate (GPM)	Wt. Lbs.
2102	2	30	45.0
2103	3	50	45.0
2104	4	80	46.0

OUTLETS

- NH..... No-Hub
- TY Ty-seal
- IC Inside Caulk
- IPS Threaded (Extra Cost)

OPTIONS

Suffix	Description
1	Nickel Bronze Veneer Top
5	Vandal Proof (Secured Grate)
8	Flat Secondary Strainer
14	Hinged Grate
23	Grate Riser (2" High)
27	Sediment Bucket (Aluminum)
31	Backwater Valve
39	Galvanized Iron Parts
179	Security Screws