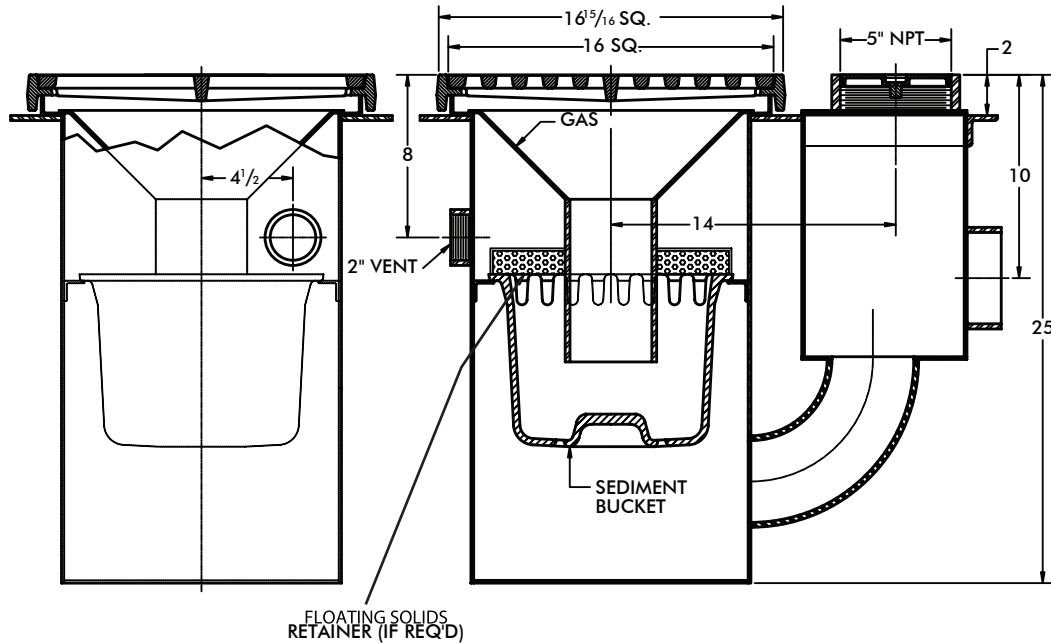


Floor Drain w/ Integral Trap

WADE

2050-G Painted industrial floor drain with heavy duty fabricated steel body with deep sump, loose set ductile iron slotted grate, floor level cleanout access with threaded brass plug, integral gas seal cone, large capacity suspended aluminum sediment bucket, integral double wall trap, 2" main body vent connection and no-hub side outlet. ANSI load class XH - Extra Heavy Duty (7,500-10,000 Lbs.) Grate Free Area - 89.1 Sq.In.



OPTIONS

| Cat. No. | Pipe Size | Wt. Lbs. |
|----------|-----------|----------|
| 2053-G | 3 | 295.0 |
| 2054-G | 4 | 295.0 |
| 2056-G | 6 | 295.0 |
| 2058-G | 8 | 300.0 |

| Suffix | Description |
|----------|-------------------------------|
| 1..... | Nickel Bronze Veneer Top |
| 5..... | Vandal Proof (Secured Grate) |
| 6..... | 1/2" Trap Primer Connection |
| 24..... | Anchor Flange |
| 26..... | Clamp Device w/ Anchor Flange |
| 31..... | Backwater Valve |
| 39..... | Galvanized Parts |
| 112..... | Floating Solids Retainer |