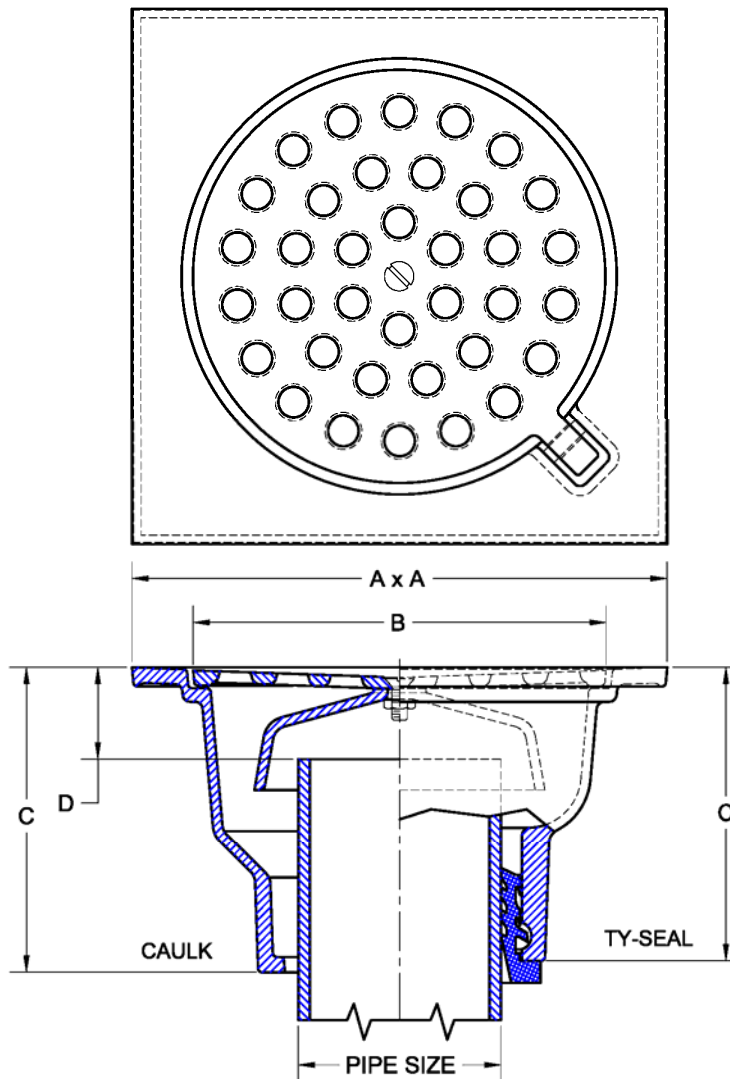


1650 Floor Drain with Square Fixed Top – Hinged Perforated Grate

Regularly Furnished: Painted cast iron floor drain with cast iron hinged perforated grate, medium sump body and bottom outlet. ASME Load Rating = L.D. (Light Duty) Under 2,000 Lbs.



PIPE SIZE	A x A	B	C		D
			CAULK	TY-SEAL	
2" (50)	6 (152) Sq.	4-3/4 (121)	3-1/2 (89)	4 (102)	1-1/4 (32)
3" (75)	8-3/4 (222) Sq.	6-3/4 (171)	5 (127)	4-13/16 (122)	1-1/4 (32)
4" (100)	12 (305) Sq.	9-5/16 (237)	5 (127)	5-1/8 (130)	1-3/8 (35)

Top Material		
✓	Suffix	Description
	-42	Cast Iron

Outlet Variations		
✓	Type	Designation
	Push-On	2TY, 3TY, 4TY
	Inside Caulk	2IC, 3IC, 4IC

Options		
✓	Suffix	Description
	-ARC	Acid Resistant Coating (C.I. Parts)
	-TSD	Trap Seal Device (Model 4405)
	-TD	Grate Supported Bucket
	-27	Sediment Bucket
	-30	Bell Trap
	-31	Backwater Valve (2,3,4" Only)
	-39	Galvanized Iron Parts