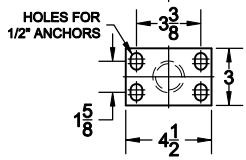
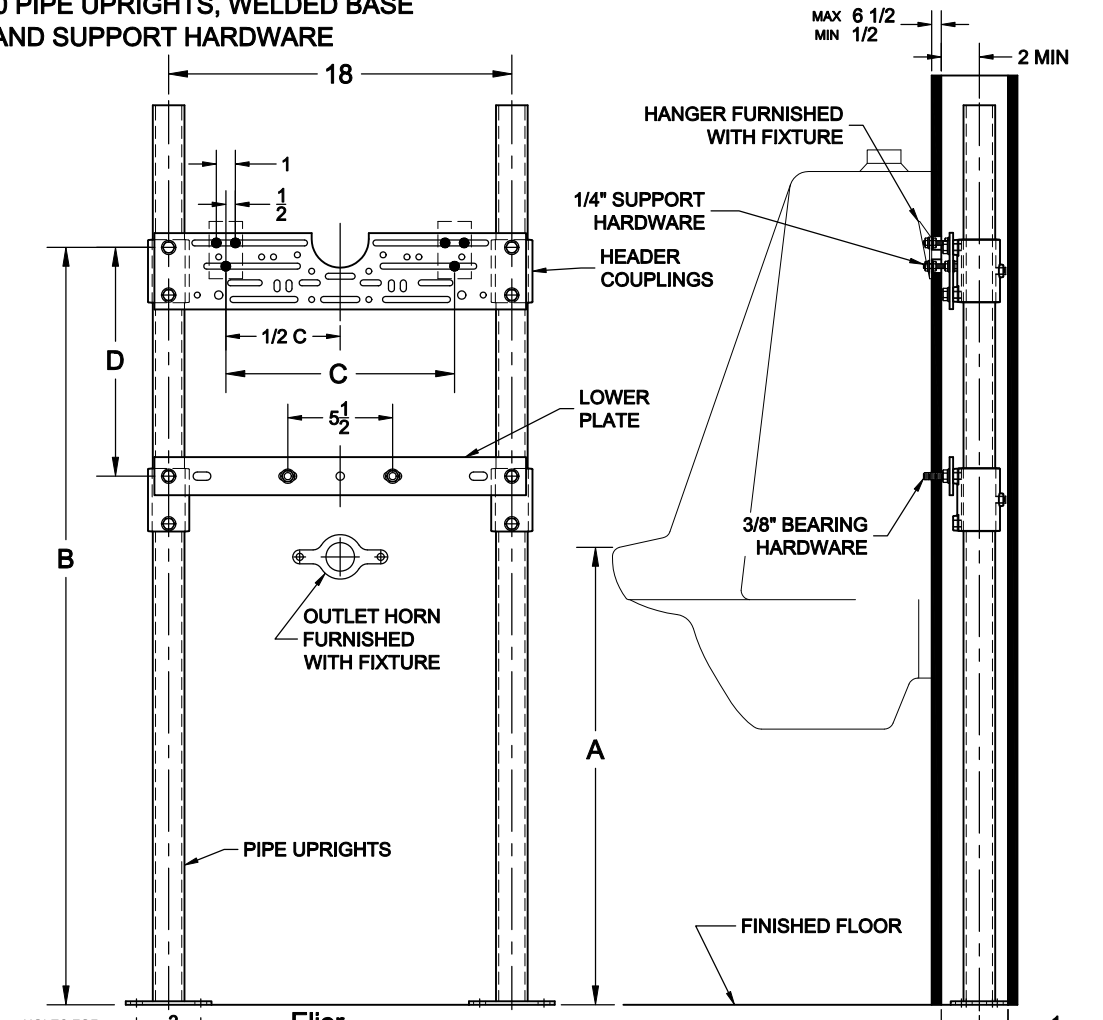


# URINAL CARRIER



400-AM11

UNIVERSAL HANGER PLATE CARRIER WITH  
SCH.40 PIPE UPRIGHTS, WELDED BASE  
FEET AND SUPPORT HARDWARE



**Eljer**

Fixture		A	B	C	D
Name	Number				
Correcto	161-1035	24	39 1/8	12	15
Correcto	161-1045	24	39 1/8	12	15
Correcto	161-1050	24	39 1/8	12	15
Correcto	161-1050	24	39 1/8	12	15
Correcto	161-1060	24	39 1/8	12	15
Correcto	161-1065	24	39 1/8	12	15
Correcto	161-1075	24	39 1/8	12	15
Correcto	161-1080	24	39 1/8	12	15
Correcto	161-2030	24	39 1/8	12	15
Correcto	161-2045	24	39 1/8	12	15
Dover	161-1150	24	32 1/8	8	12
Dover	161-1155	24	32 1/8	8	12
Savon	161-1090	24	35 3/8	11	15 1/2
Savon	161-1095	24	35 3/8	11	15 1/2
Bedfordshire	161-1090	24	31 5/8	8	14 3/16
Signature Series	161-1190	24	35 3/8	11	10
Signature Series	161-2090	24	35 3/8	11	10
Signature Series	161-2095	24	35 3/8	11	10

**OPTIONS**

Suffix	Description
<input type="checkbox"/> M36	RECTANGULAR STEEL UPRIGHTS

Approval Date  
 Customer Approval  
 Job Location  
 Job Name

Dimensional Data (Inches/mm) are Subject to Manufacturers Tolerance and Change Without Notice.

Wade Division / Tyler Pipe Assumes No Responsibility For Superseded or Voided Data