

SERVICE SINK CARRIER



FIXTURE

620-03

HANGER PLATE CARRIER WITH PIPE UPRIGHTS, WELDED BASE FEET, A.R.E. EXPOSED ARMS & SUPPORT HARDWARE.

Manufacturer American Standard

Name All Purpose No. 9061.292

Style Plaster Sink 9061.250

9061.193

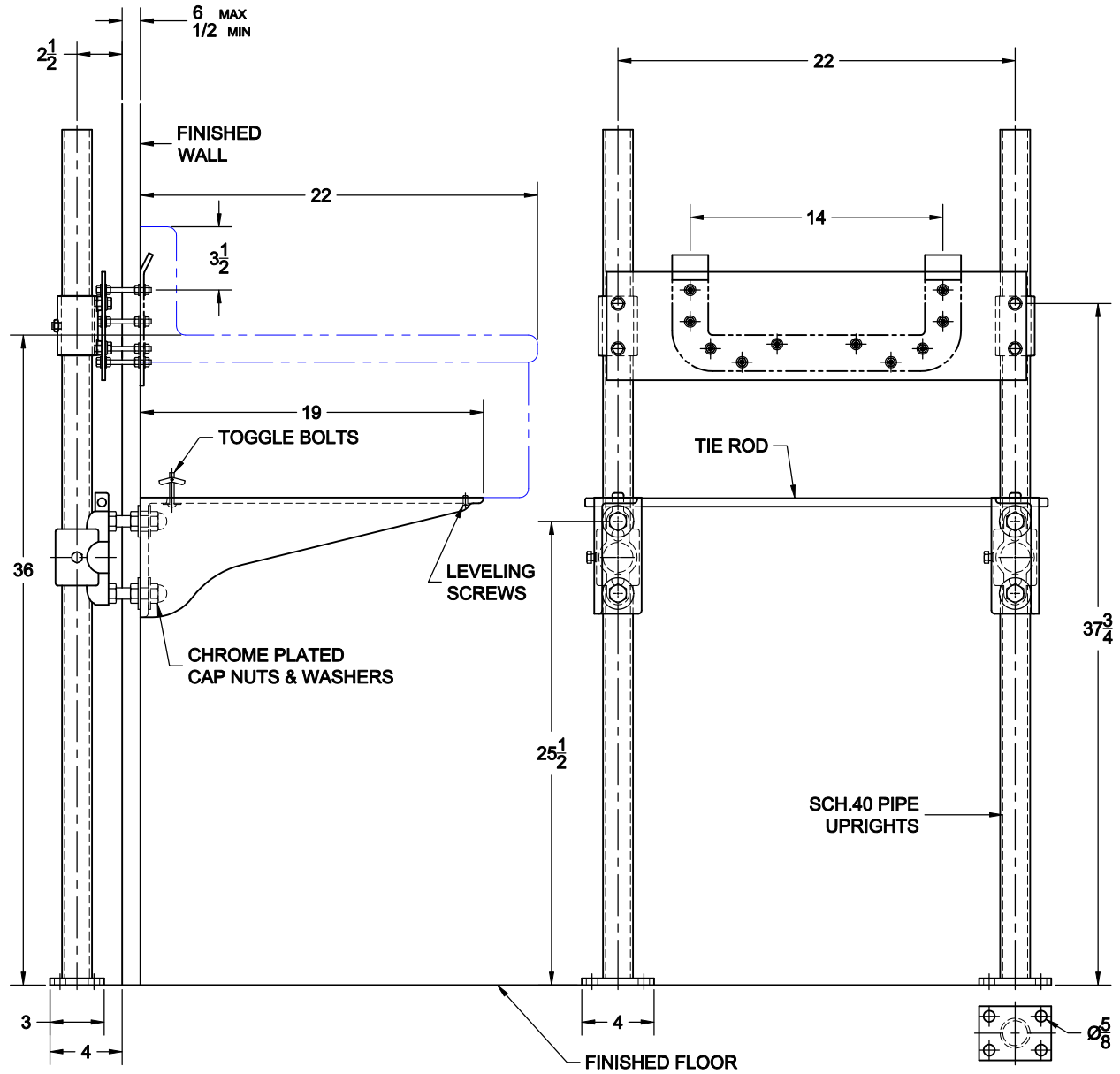
Approval Date

Customer Approval

Job Location

Job Name

Dimensional Data (Inches/mm) are Subject to Manufacturers Tolerance and Change Without Notice. Wade Division / Tyler Pipe Assumes No Responsibility For Superseded or Voided Data



OPTIONS

Cat. No.	Type	Wt. Lbs.	Suffix	Description
620-03	SGL	59.0	M36	SQUARE UPRIGHTS

NOTE: CONTRACTOR MUST VERIFY DIMENSIONS WITH FIXTURE MANUFACTURER ROUGH-IN DATA TYLER PIPE / WADE DIVISION ACCEPTS NO RESPONSIBILITY FOR ANY INACCURACIES IN DRAWING

AutoCad.dwg