

# SERVICE SINK CARRIER



Approval Date \_\_\_\_\_  
 Customer Approval \_\_\_\_\_  
 Job Location \_\_\_\_\_  
 Job Name \_\_\_\_\_  
 Dimensional Data (inches/mm) are Subject to Manufacturers Tolerance and Change Without Notice.

620-011

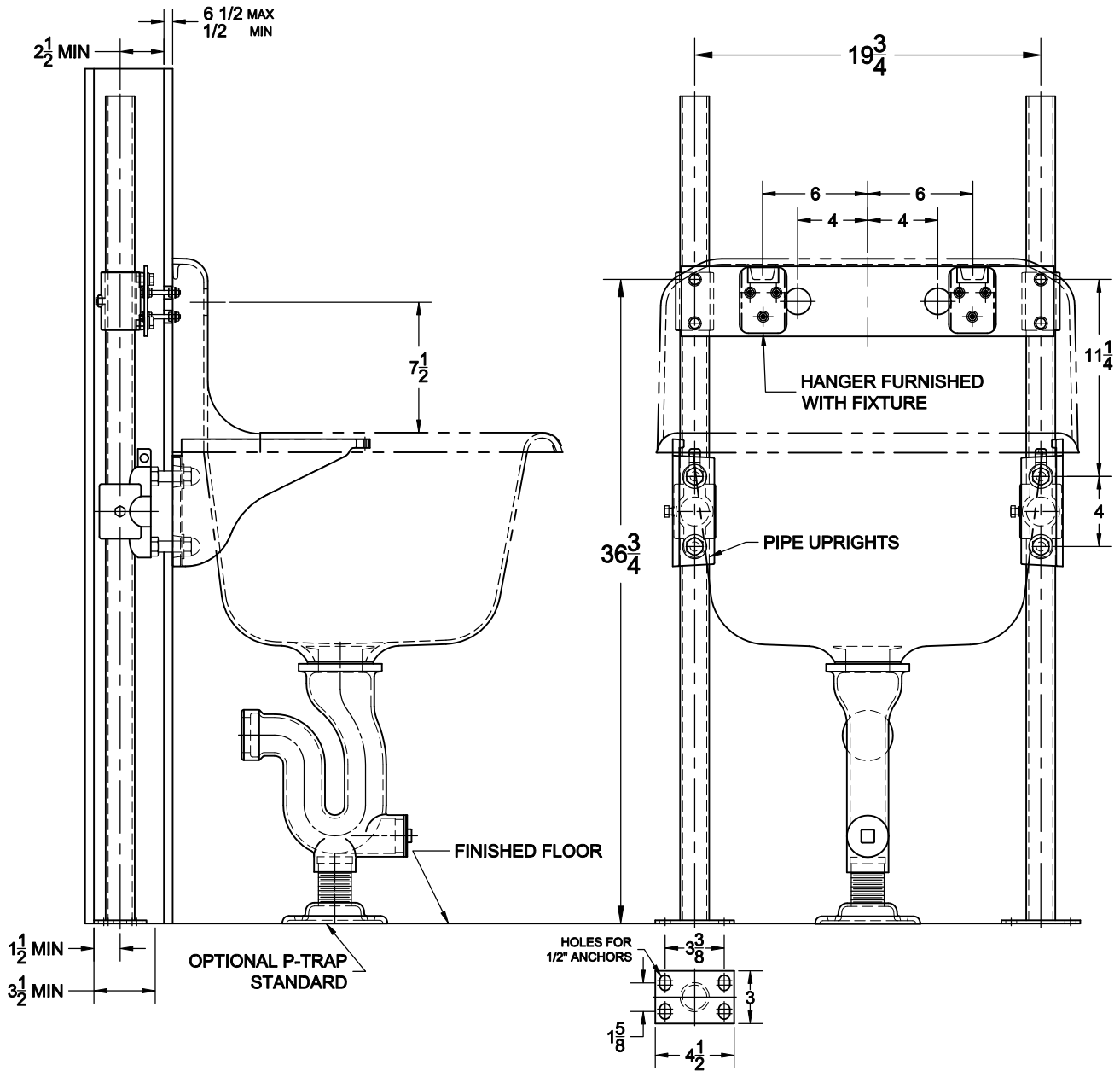
HANGER PLATE CARRIER WITH PIPE UPRIGHTS,  
 WELDED BASE FEET, A.R.E. EXPOSED ARMS  
 AND SUPPORT HARDWARE.

## FIXTURE

Manufacturer Kohler

Name Bannon No. K-6716

Style Service Sink K-6719



### OPTIONS

Cat. No.	Type	Wt. Lbs.	Suffix	Description
<input type="checkbox"/> 620-011	SGL	59.0	<input type="checkbox"/> M36	SQUARE UPRIGHTS

NOTE: CONTRACTOR MUST VERIFY DIMENSIONS WITH FIXTURE MANUFACTURER ROUGH-IN DATA  
 TYLER PIPE / WADE DIVISION ACCEPTS NO RESPONSIBILITY FOR ANY INACCURACIES IN DRAWING

AutoCad.dwg