

# SINK CARRIER



Approval  
Date

Customer  
Approval

Job  
Location

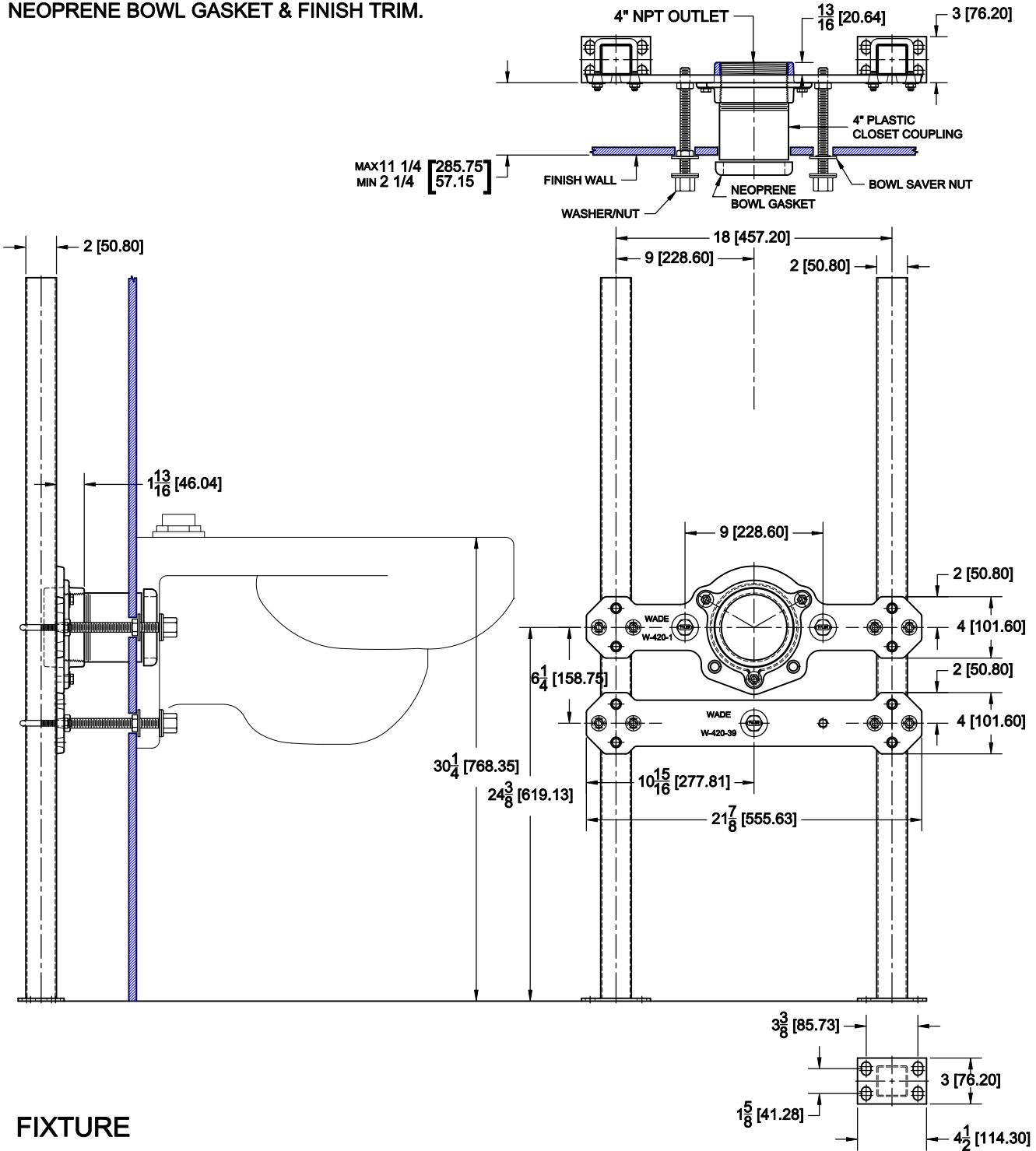
Job  
Name

Dimensional Data (Inches/mm) are Subject to Manufacturers Tolerance and Change Without Notice. Wade Division / Tyler Pipe Assumes No Responsibility For Superseded or Voided Data

640

CLINICAL SERVICE SINK CARRIER WITH STEEL UPRIGHTS,  
CLOSET COUPLING, SUPPORT HARDWARE,  
NEOPRENE BOWL GASKET & FINISH TRIM.

SHEET 1 OF 3



## FIXTURE

Manufacturer CRANE

Name SANI-SINK No. 7-544

Style CLINIC SINK 7H-544

Cat. No.

Type

Wt. Lbs.

640

SINGLE

45.0

SEE SHEETS 2 & 3 FOR OPTIONAL FITTINGS

AutoCad.dwg