

SERVICE SINK CARRIER



Approval Date _____
 Customer Approval _____
 Job Location _____
 Job Name _____
 Dimensional Data (Inches/mm) are Subject to Manufacturers Tolerance and Change Without Notice. Wade Division / Tyler Pipe Assumes No Responsibility For Superseded or Voided Data

620-FA26

HANGER PLATE CARRIER WITH PIPE UPRIGHTS, WELDED BASE FEET, HEAVY DUTY ARMS AND SUPPORT HARDWARE.

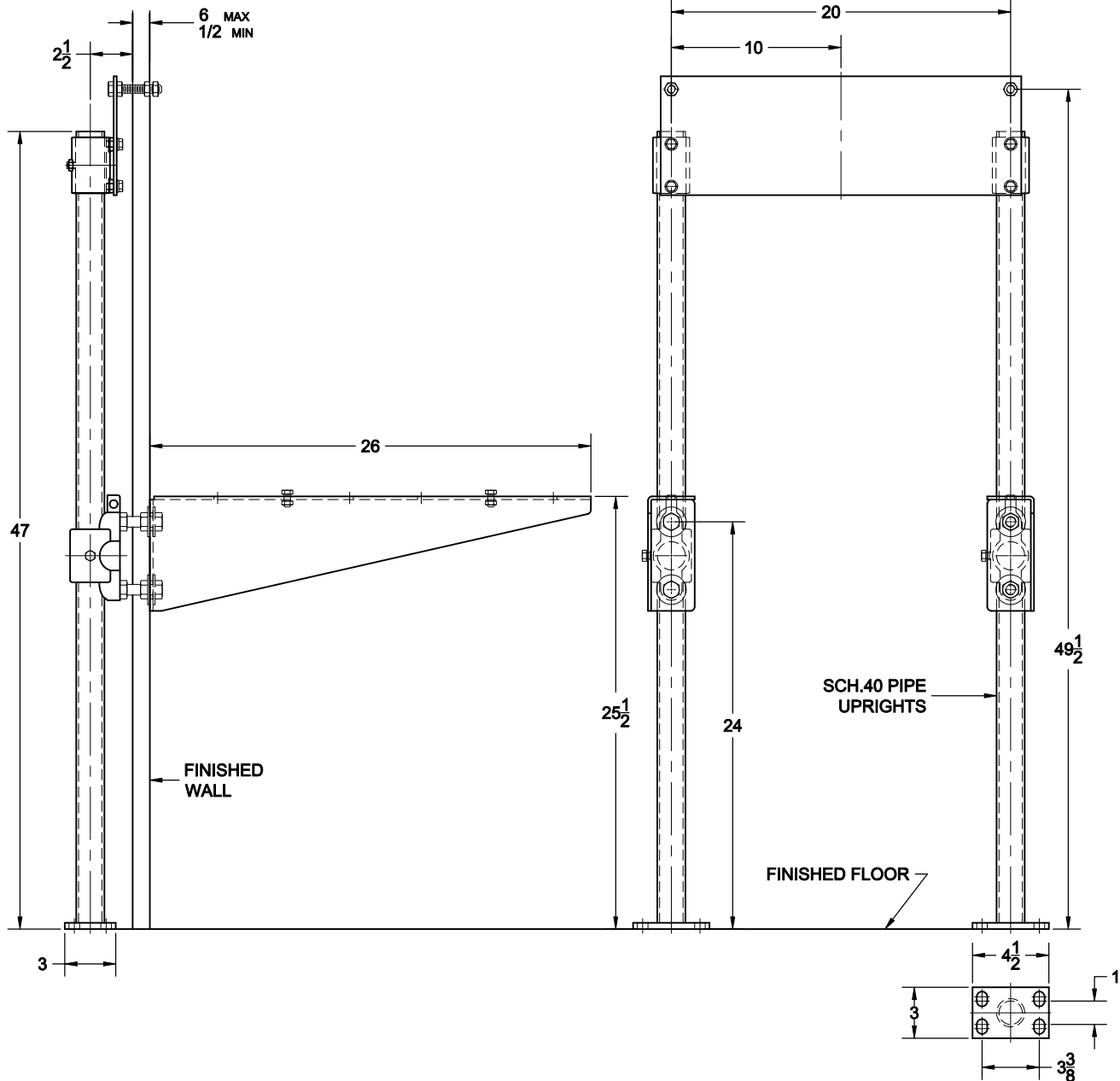
FIXTURE

Manufacturer Whitehall

Name Surgical

No. SS-1

Style Scrub Sink



OPTIONS

| Cat. No. | Type | Wt. Lbs. | Suffix | Description |
|-----------------------------------|------|----------|------------------------------|-----------------|
| <input type="checkbox"/> 620-FA26 | SGL | 59.0 | <input type="checkbox"/> M36 | SQUARE UPRIGHTS |

NOTE: CONTRACTOR MUST VERIFY DIMENSIONS WITH FIXTURE MANUFACTURER ROUGH-IN DATA
 TYLER PIPE / WADE DIVISION ACCEPTS NO RESPONSIBILITY FOR ANY INACCURACIES IN DRAWING

AutoCad.dwg