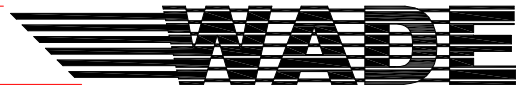


SERVICE SINK CARRIER



620-FA26

FIXTURE

HANGER PLATE CARRIER WITH PIPE UPRIGHTS, WELDED BASE FEET, HEAVY DUTY ARMS AND SUPPORT HARDWARE.

Manufacturer Whitehall / Acorn

Name Surgical No. 4101

Style Scrub Sink SS-1

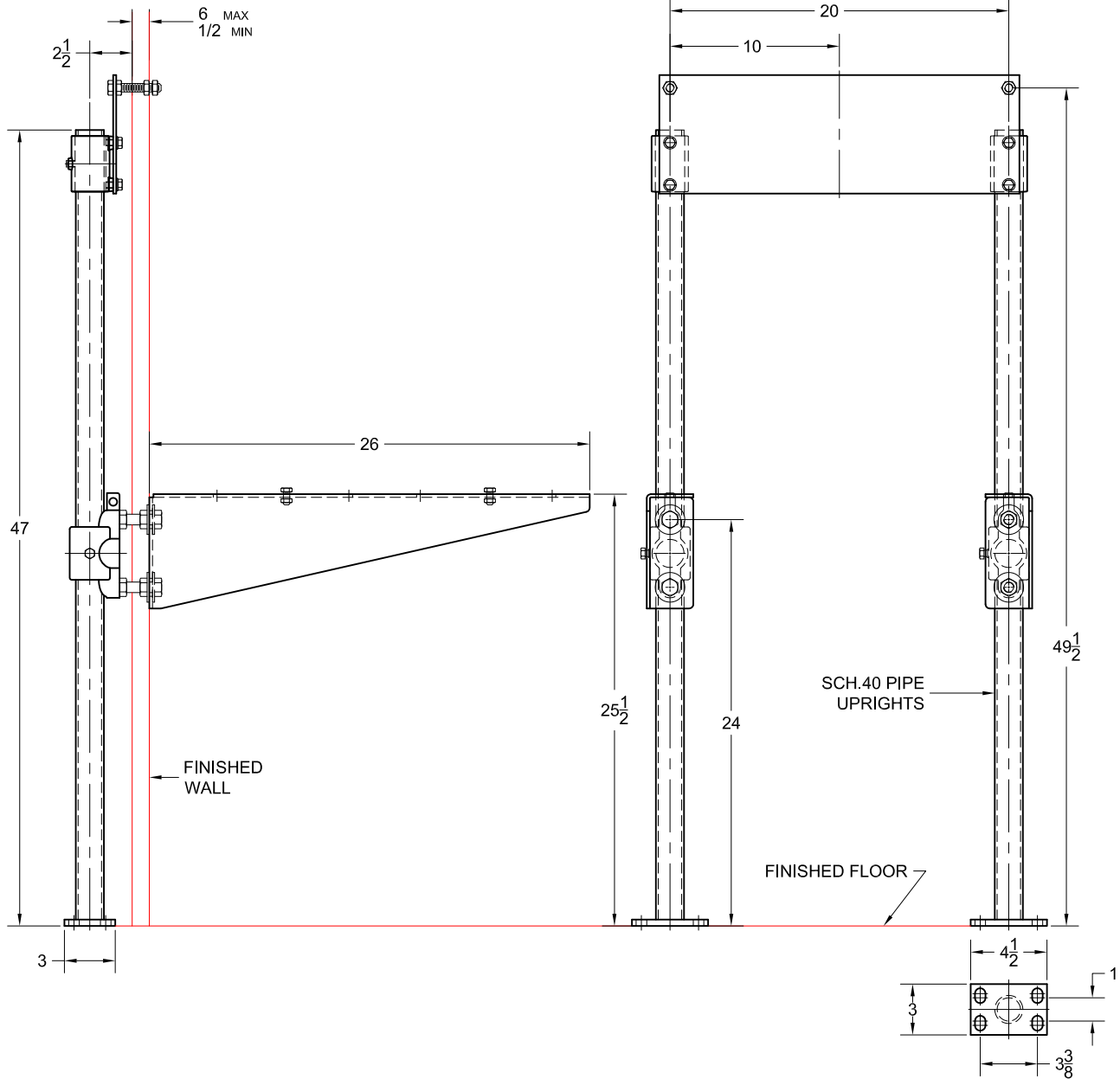
Approval Date

Customer Approval

Job Location

Job Name

Dimensional Data (Inches/mm) are Subject to Manufacturers Tolerance and Change Without Notice. Wade Division / Tyler Pipe Assumes No Responsibility For Superseded or Voided Data



OPTIONS

Cat. No.	Type	Wt. Lbs.	Suffix	Description
<input type="checkbox"/> 620-FA26	SGL	59.0	<input type="checkbox"/> M36	SQUARE UPRIGHTS

NOTE: CONTRACTOR MUST VERIFY DIMENSIONS WITH FIXTURE MANUFACTURER ROUGH-IN DATA
 TYLER PIPE / WADE DIVISION ACCEPTS NO RESPONSIBILITY FOR ANY INACCURACIES IN DRAWING

AutoCad.dwg