

402 URINAL CARRIER

UNIVERSAL HANGER PLATE CARRIER WITH
SCH.40 PIPE UPRIGHTS, WELDED BASE
FEET AND SUPPORT HARDWARE

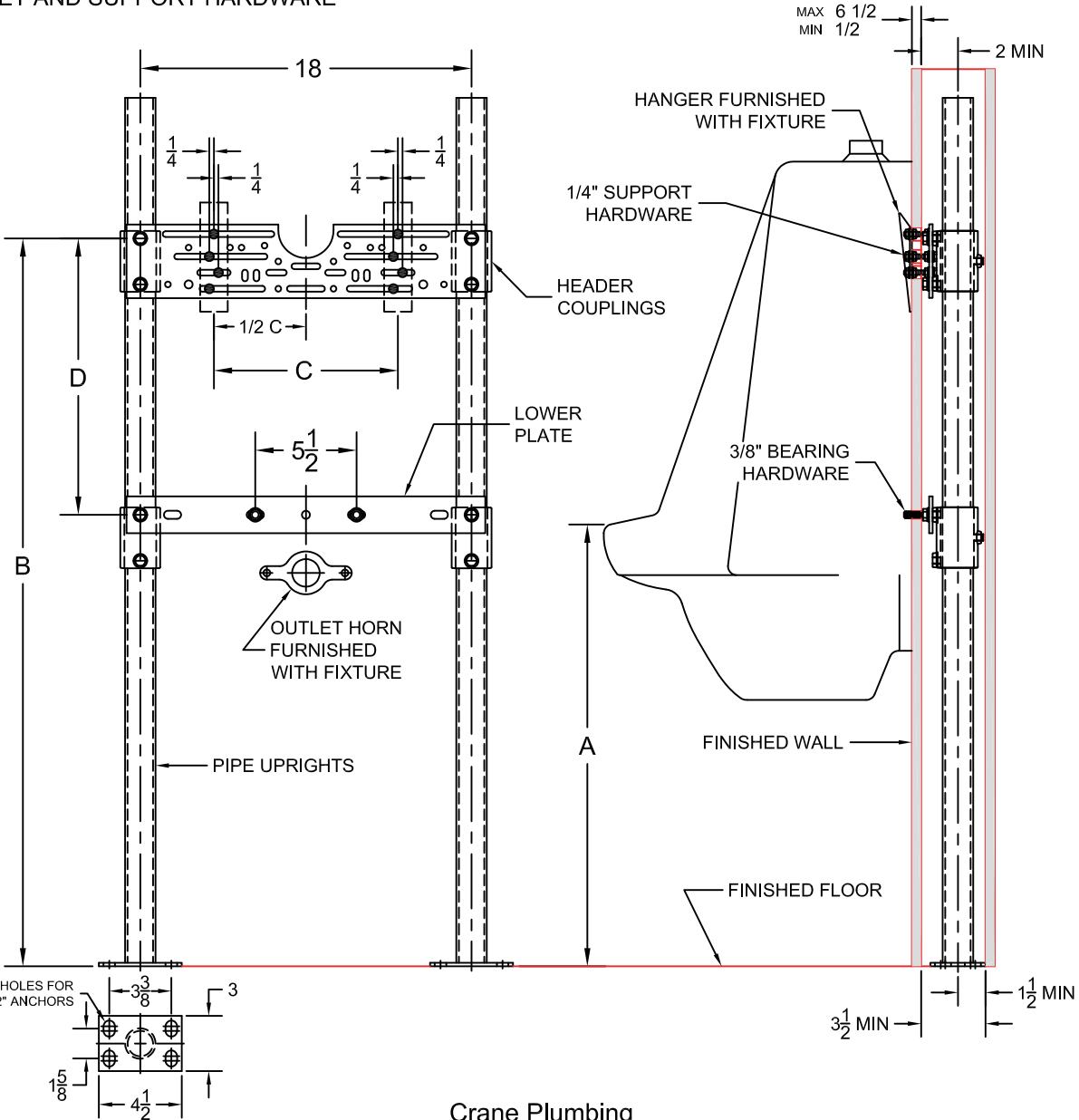
Approval
Date

Customer
Approval

Job
Location

Job
Name

Dimensional Data (Inches/mm) are Subject to Manufacturers Tolerance and Change Without Notice. Wade Division / Tyler Pipe Assumes No Responsibility For Superseded or Voided Data



Crane Plumbing

FIXTURE		A	B	C	D
Name	Number				
Cromwell	7197	24	39 9/16	10	15
Cromwell	7198	24	39 9/16	10	15
Manhattan	7306	24	32 1/2	6	12 1/4
Manhattan	7307	24	32 1/2	6	12 1/4
Manhattan	7308	24	32 1/2	6	12 1/4
Manhattan	7309	24	32 1/2	6	12 1/4
Embassy	7160	24	35 1/16	10	14

FIXTURE		A	B	C	D
Name	Number				
Embassy	7161	24	35 1/16	10	14
Lansing	7167	17	34 3/4	10	18
Embassy	7360	24	33 3/4	10	15
Embassy	7361	24	33 3/4	10	15
Del Rio	7390	24	39 3/8	10	15
Cromwell	7397	24	39 9/16	10	15

OPTIONS

Suffix	Description
M36	RECTANGULAR STEEL UPRIGHTS