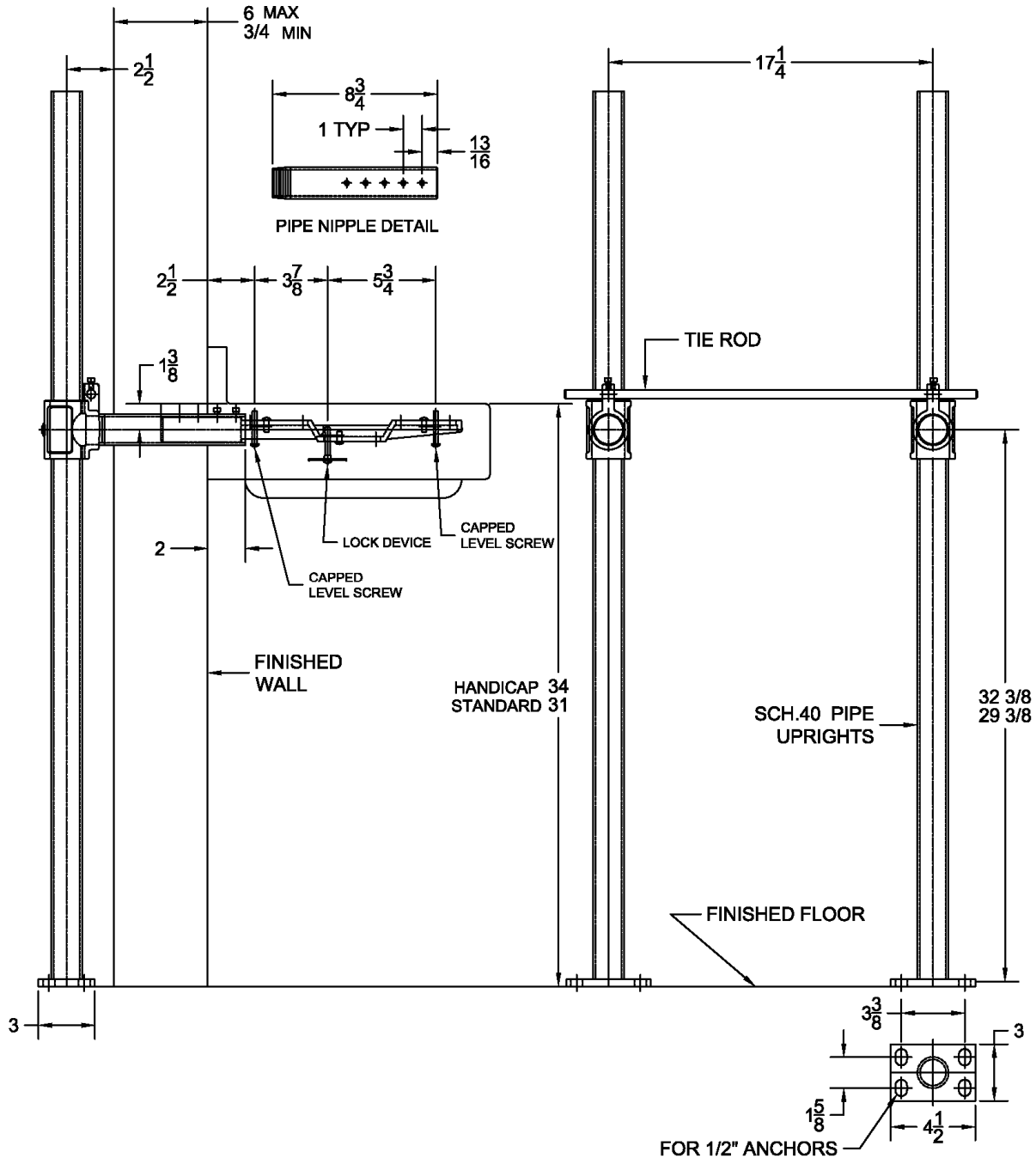


520-07 Lavatory Carrier (Concealed Arms)

Regularly Furnished: Single lavatory fixture support with painted cast iron header couplings, round tubular steel uprights, cast iron concealed arms, zinc plated support hardware and welded base feet.

ASME Type II Lavatory Carrier Load Rating = 250 Lb.



Acorn Engineering	1950LC
-------------------	--------

UPC	Model	Arm Package			Support Kit (8 3/4" Pipe Nipples)			Round Uprights		
		Qty	Part No.	UPC	Qty	Part No.	UPC	Qty	Part No.	UPC
331599	520-07	1	WP520-07	234302	1	WP520-2R-PN875	544180	2	PU-2F	227434
331339	520-07-M36	1	WP520-07	234302	1	WP520-2S-PN875	544449	2	PU-22-36	423829