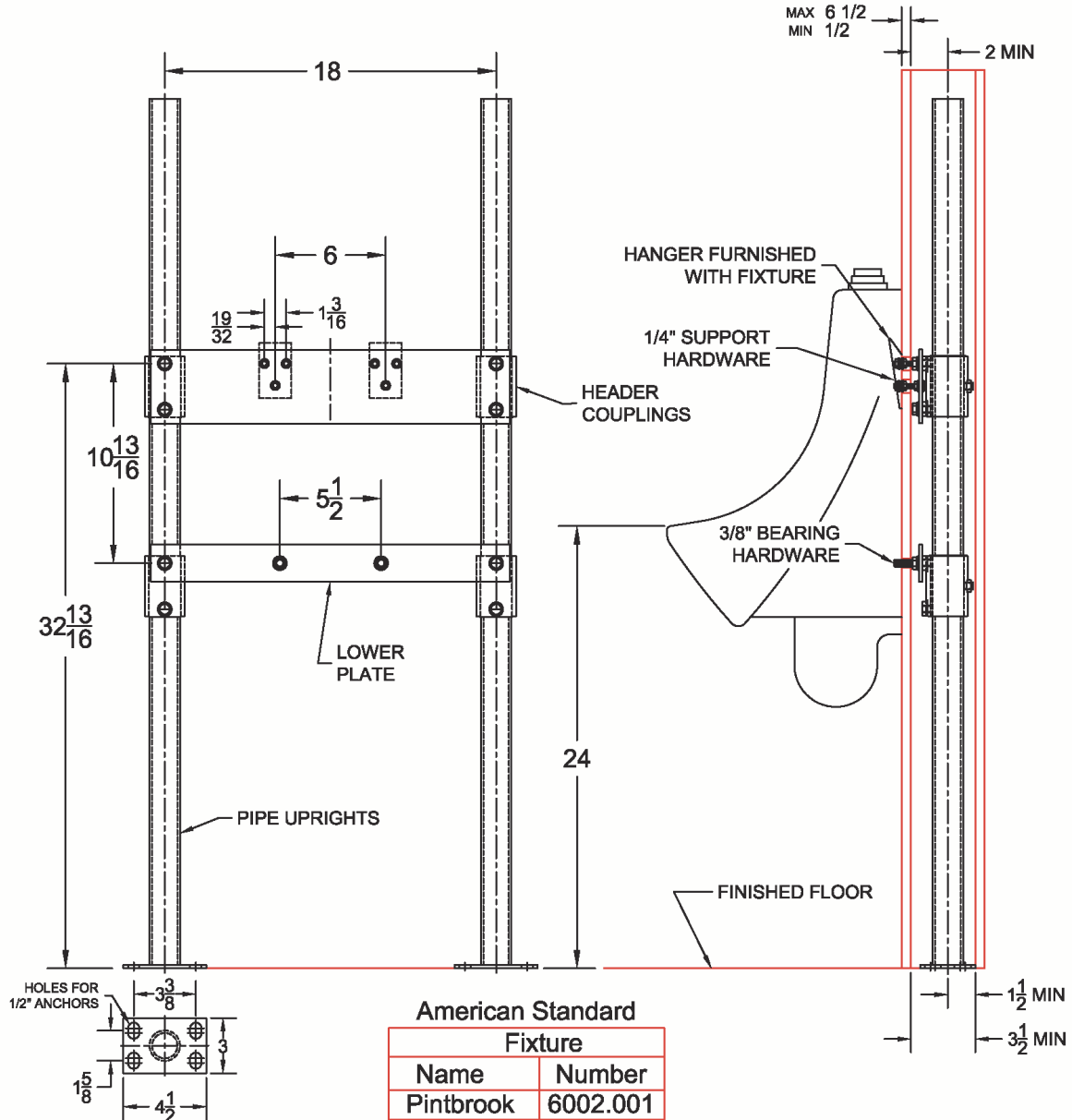


402 Urinal Carrier (Support Plate Style)

Regularly Furnished: Single urinal fixture support with painted cast iron header couplings, round tubular steel uprights, 7 gauge support plates, zinc plated support hardware and welded base feet.

ASME Type II Urinal Carrier Load Rating = 200 Lb

**American Standard
Pintbrook 6002.001**



UPC	Model	Plate Package			Support Kit			Round Uprights		
		Qty	Part No.	UPC	Qty	Part No.	UPC	Qty	Part No.	UPC
404465	402	1	WP465-U11A	465001	2	WP400-2R	544043	2	PU-1F	227410
		1	WP465-U11B	465002						