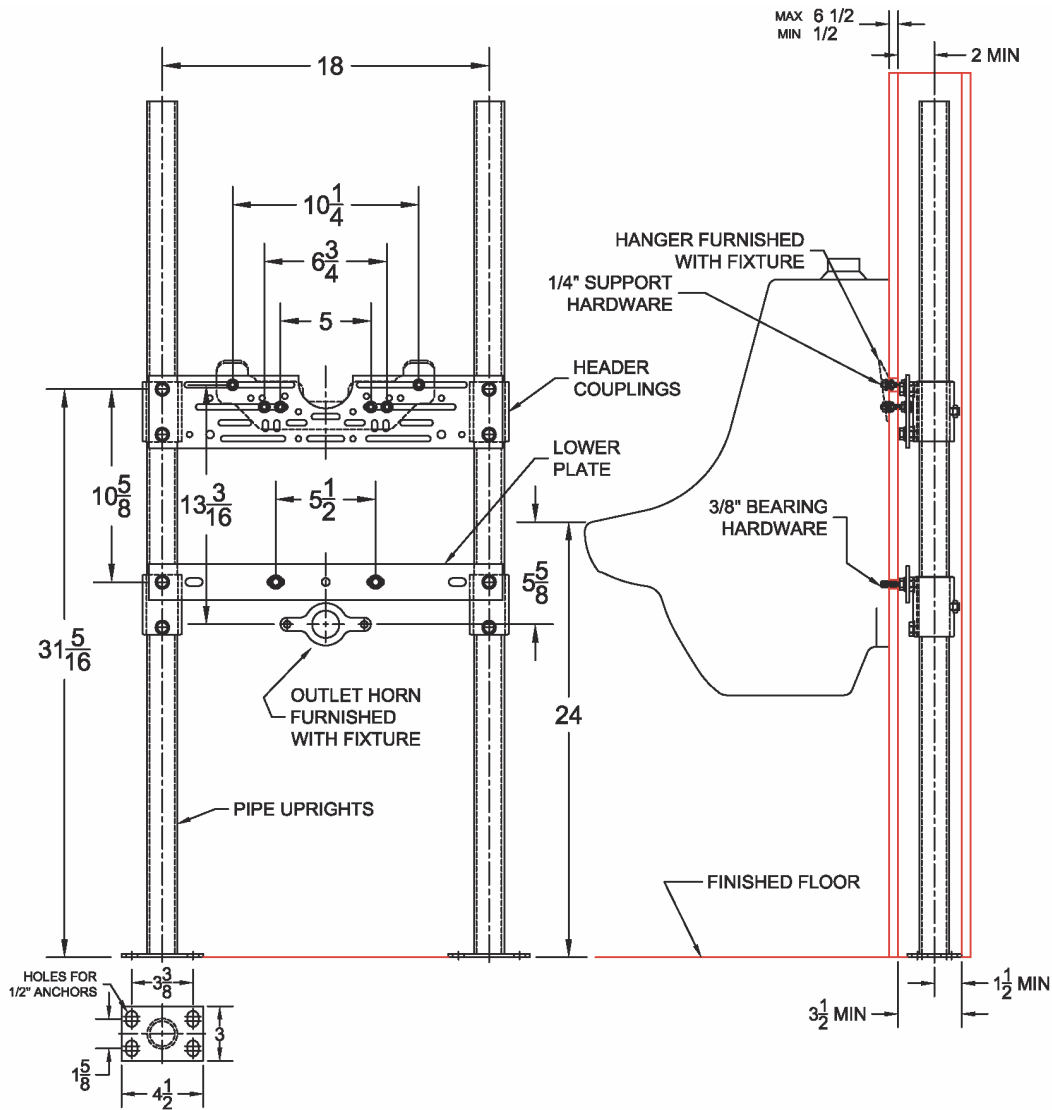


## 402 Urinal Carrier (Support Plate Style)

Regularly Furnished: Single water lavatory fixture support with painted cast iron header couplings, round tubular steel uprights, 7 gauge support plates, zinc plated support hardware and welded base feet.  
 ASME Type II Urinal Carrier Load Rating = 200 Lb



Sloan				
WEUS-7000 SU7006	WEUS-7002 SU-7006	WEUS-7005 SU7009	WEUS-7006 SU-7016	WEUS-7000 SU-7019

Model	Plate Package			Support Kit			Round Uprights		
	Qty	Part No.	UPC	Qty	Part No.	UPC	Qty	Part No.	UPC
402 411208	1	WP415-U8	415400	2	WP400-2R	544180	2	PU-1F	227410
	1	WP417-U8	417400						
405-M36 411215	1	WP415-U8	415400	2	WP400-2S	544081	2	PU-22-47	406419
	1	WP417-U8	417400						