

LAVATORY CARRIER



Approval Date

Customer Approval

Job Location

Job Name

Dimensional Data (Inches/mm) are Subject to Manufacturers Tolerance and Change Without Notice. Wade Division / Tyler Pipe Assumes No Responsibility For Superseded or Voided Data

520-08-M25-4

CONCEALED ARM CARRIER WITH PIPE UPRIGHTS, WELDED BASE FEET, C.I. HEADER COUPLINGS, PIPE NIPPLES & HARDWARE.

FIXTURE

Manufacturer Zurn

Name High Back

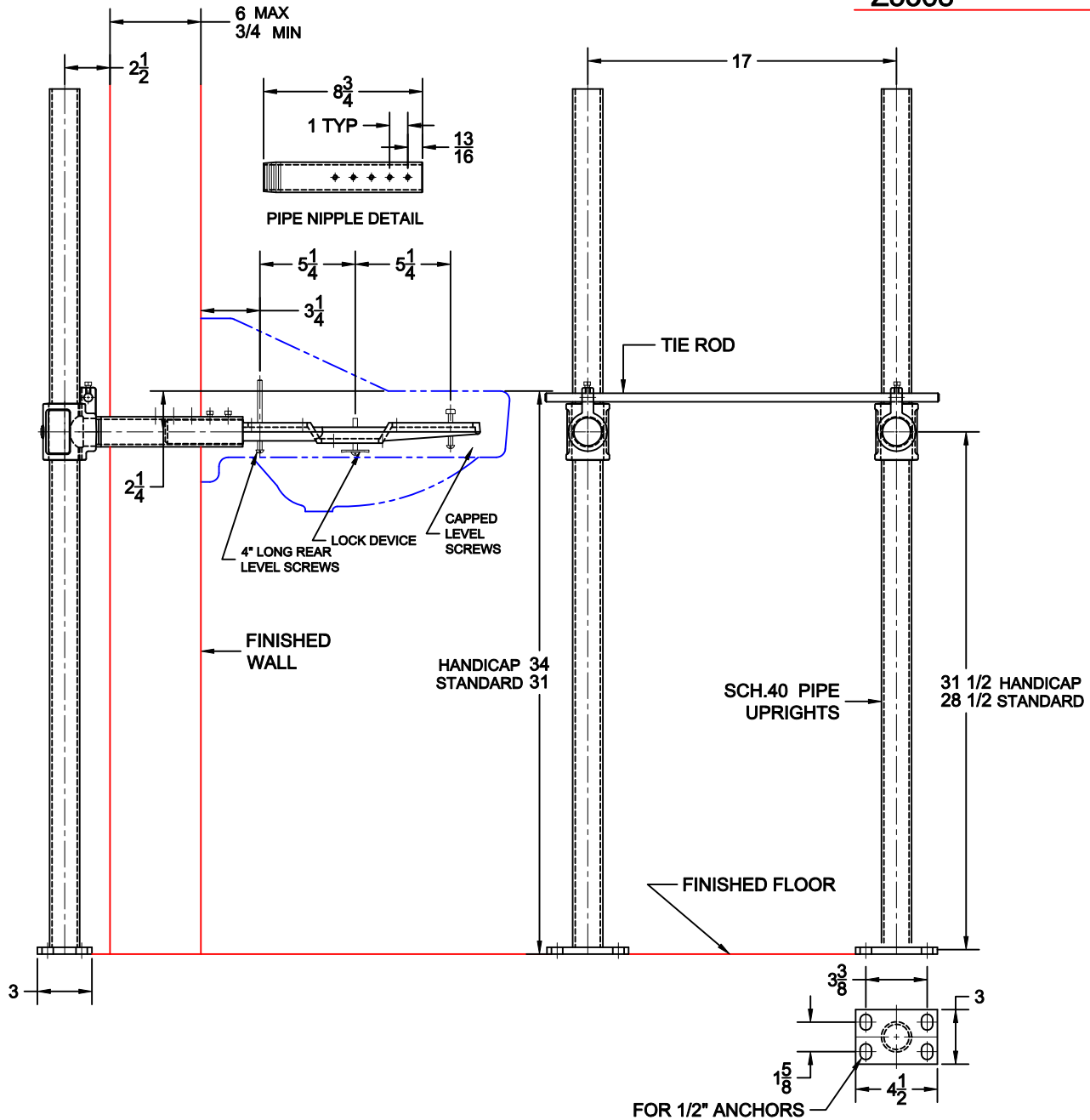
No. Z5360

Style Lavatory

Z5361

Z5364

Z5368



OPTIONS

Cat. No.	Type	Wt. Lbs.	Suffix	Description
<input type="checkbox"/> 520-08-M25-4	SGL	36.0	<input type="checkbox"/> M36	SQUARE UPRIGHTS

NOTE: CONTRACTOR MUST VERIFY DIMENSIONS WITH FIXTURE MANUFACTURER ROUGH-IN DATA
TYLER PIPE / WADE DIVISION ACCEPTS NO RESPONSIBILITY FOR ANY INACCURACIES IN DRAWING

AutoCad.dwg