

# LAVATORY CARRIER



Approval Date

Customer Approval

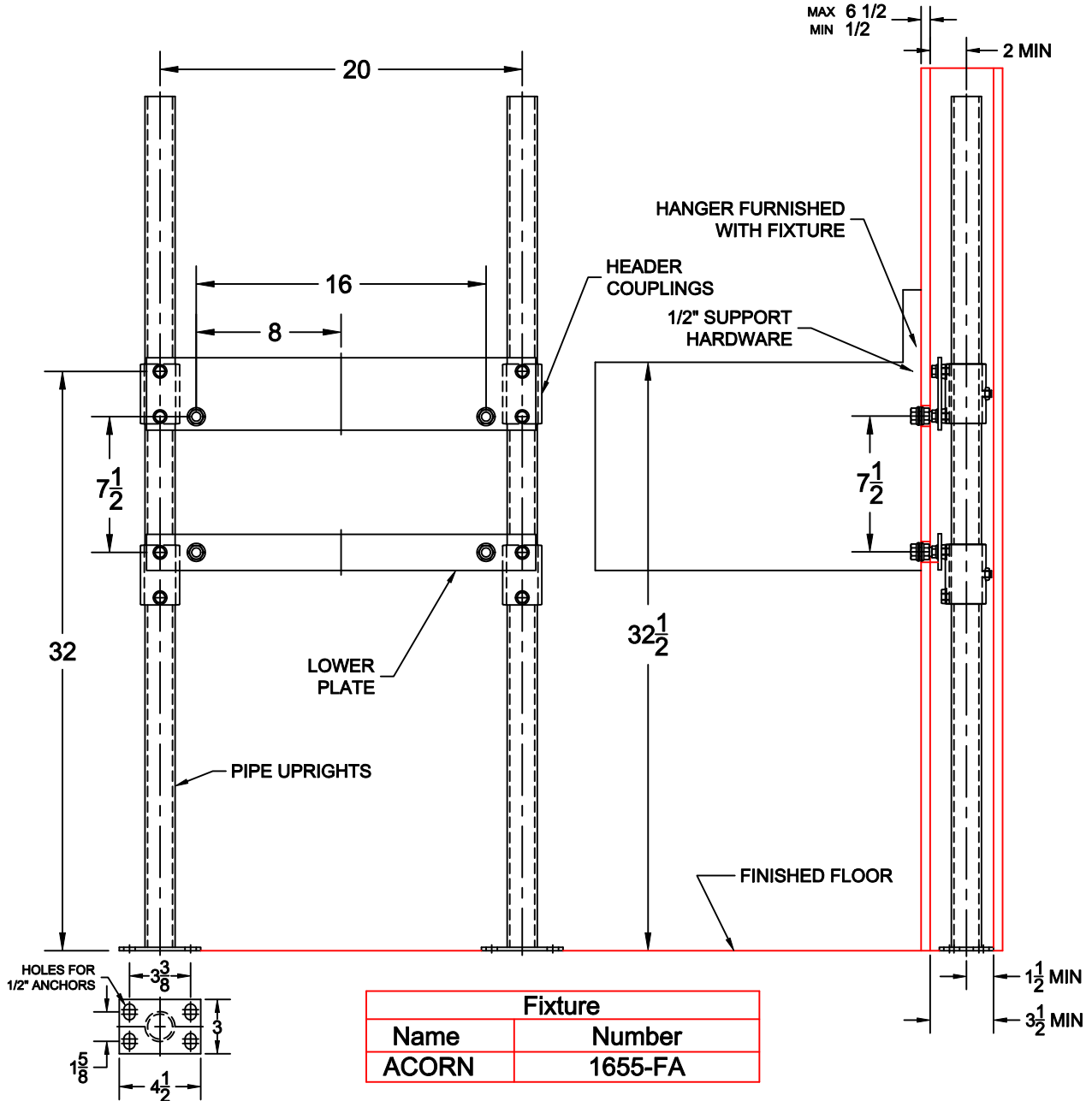
Job Location

Job Name

Dimensional Data (Inches/mm) are Subject to Manufacturers Tolerance and Change Without Notice. Wade Division / Tyler Pipe Assumes No Responsibility For Superseded or Voided Data

## 420-AM11-M22

HANGER PLATE CARRIER WITH SCH. 40 PIPE UPRIGHTS, WELDED BASE FEET AND 1/2" DIA. SUPPORT HARDWARE



### OPTIONS

Suffix	Description
□ M36	RECTANGULAR STEEL UPRIGHTS

AutoCad.dwg