

LAVATORY CARRIER



Approval Date

Customer Approval

Job Location

Job Name

Dimensional Data (Inches/mm) are Subject to Manufacturers Tolerance and Change Without Notice. Wade Division / Tyler Pipe Assumes No Responsibility For Superseded or Voided Data

520-09

SINGLE CONCEALED ARM LAVATORY CARRIER WITH SCH.40 PIPE UPRIGHTS, CAST IRON HEADER COUPLINGS AND SUPPORT HARDWARE.

FIXTURE

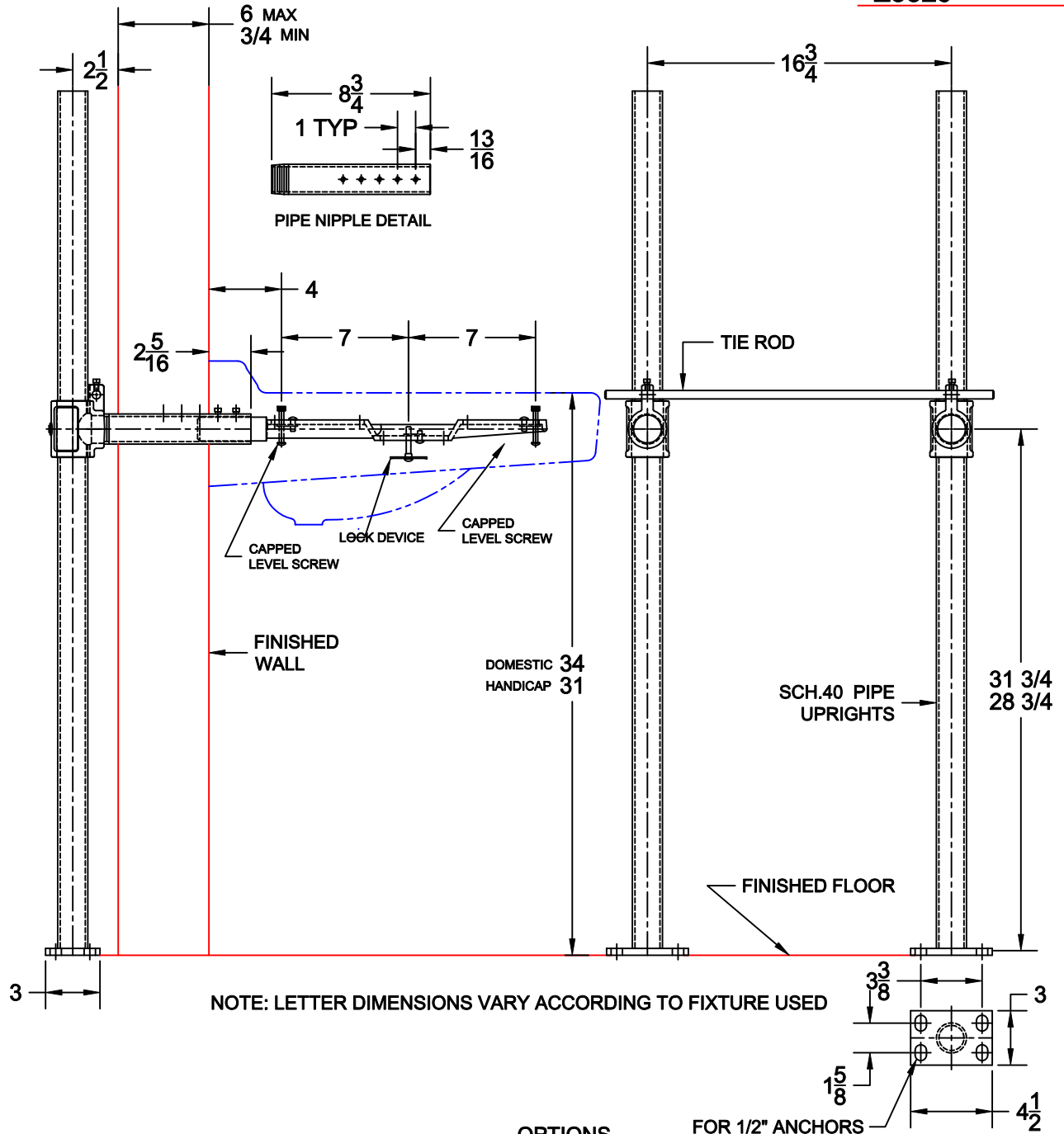
Manufacturer Zurn

Name Wheelchair No. Z5321

Style Lavatory Z5324

Z5328

Z5329



Cat. No.	Type	Wt. Lbs.	OPTIONS	Suffix	Description
<input type="checkbox"/> 520-09	Single	36.0	<input type="checkbox"/> M36		Rectangular Steel Uprights

AutoCad.dwg