

# SERVICE SINK CARRIER



## FIXTURE

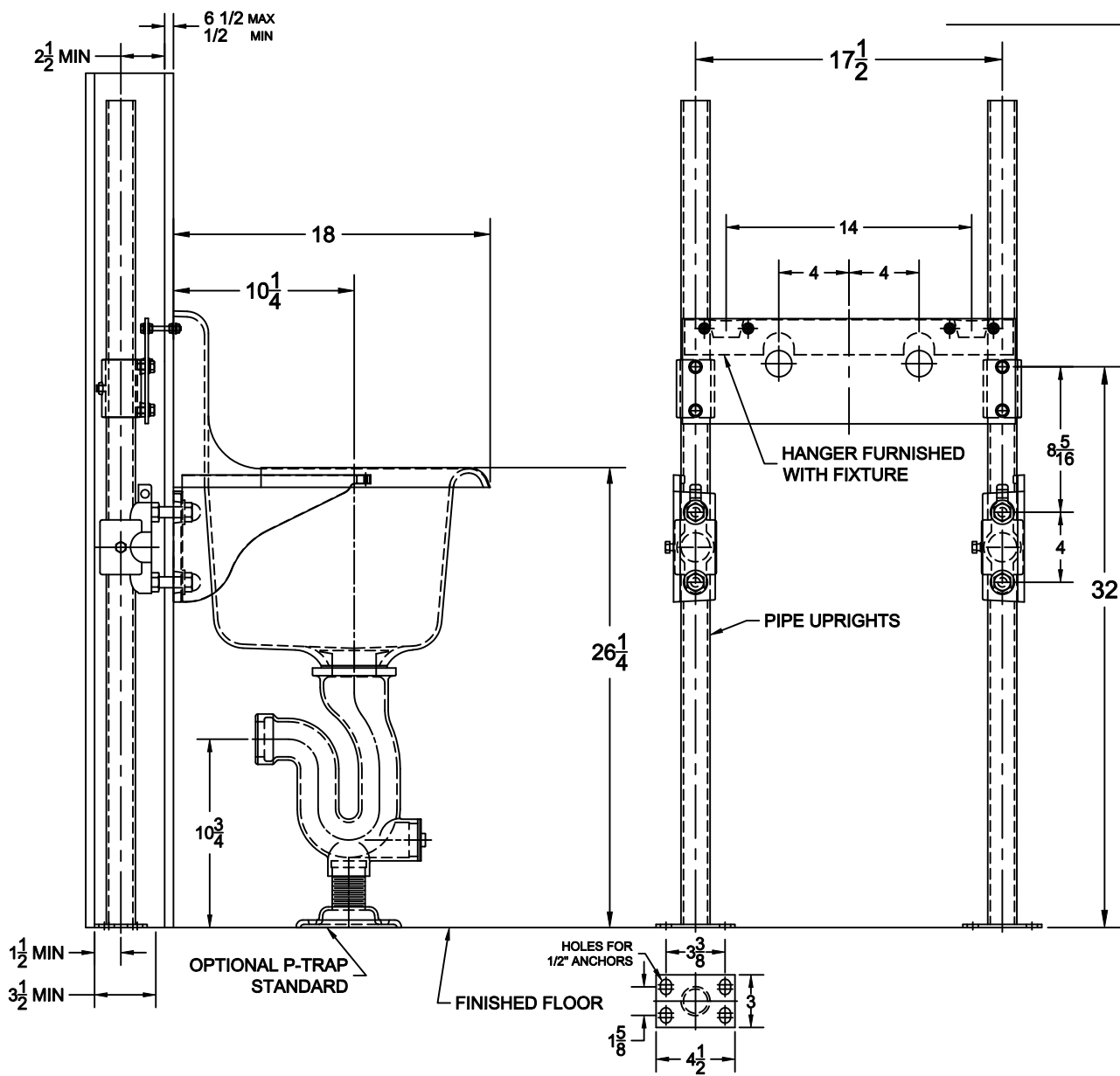
Manufacturer Wade Pro  
 Name Akrun No. MS-2218DB-G  
 Style Service Sink MS-2218B-G

## FIXTURE

Manufacturer Gerber  
 Name \_\_\_\_\_ No. 12-910  
 Style Service Sink 12-918

Approval Date \_\_\_\_\_  
 Customer Approval \_\_\_\_\_  
 Job Location \_\_\_\_\_  
 Job Name \_\_\_\_\_  
 Dimensional Data (Inches/mm) are Subject to Manufacturers Tolerance and Change Without Notice.

**620-011**  
**HANGER PLATE CARRIER WITH PIPE UPRIGHTS,**  
**WELDED BASE FEET, A.R.E. EXPOSED ARMS**  
**AND SUPPORT HARDWARE.**



### OPTIONS

Cat. No.	Type	Wt. Lbs.	Suffix	Description
<input type="checkbox"/> 620-011	SGL	59.0	<input type="checkbox"/> M36	SQUARE UPRIGHTS

NOTE: CONTRACTOR MUST VERIFY DIMENSIONS WITH FIXTURE MANUFACTURER ROUGH-IN DATA  
 TYLER PIPE / WADE DIVISION ACCEPTS NO RESPONSIBILITY FOR ANY INACCURACIES IN DRAWING

AutoCad.dwg