

# SINK CARRIER



Approval Date

Customer Approval

Job Location

Job Name

Dimensional Data (Inches/mm) are Subject to Manufacturers Tolerance and Change Without Notice. Wade Division / Tyler Pipe Assumes No Responsibility For Superseded or Voided Data

620-SC159

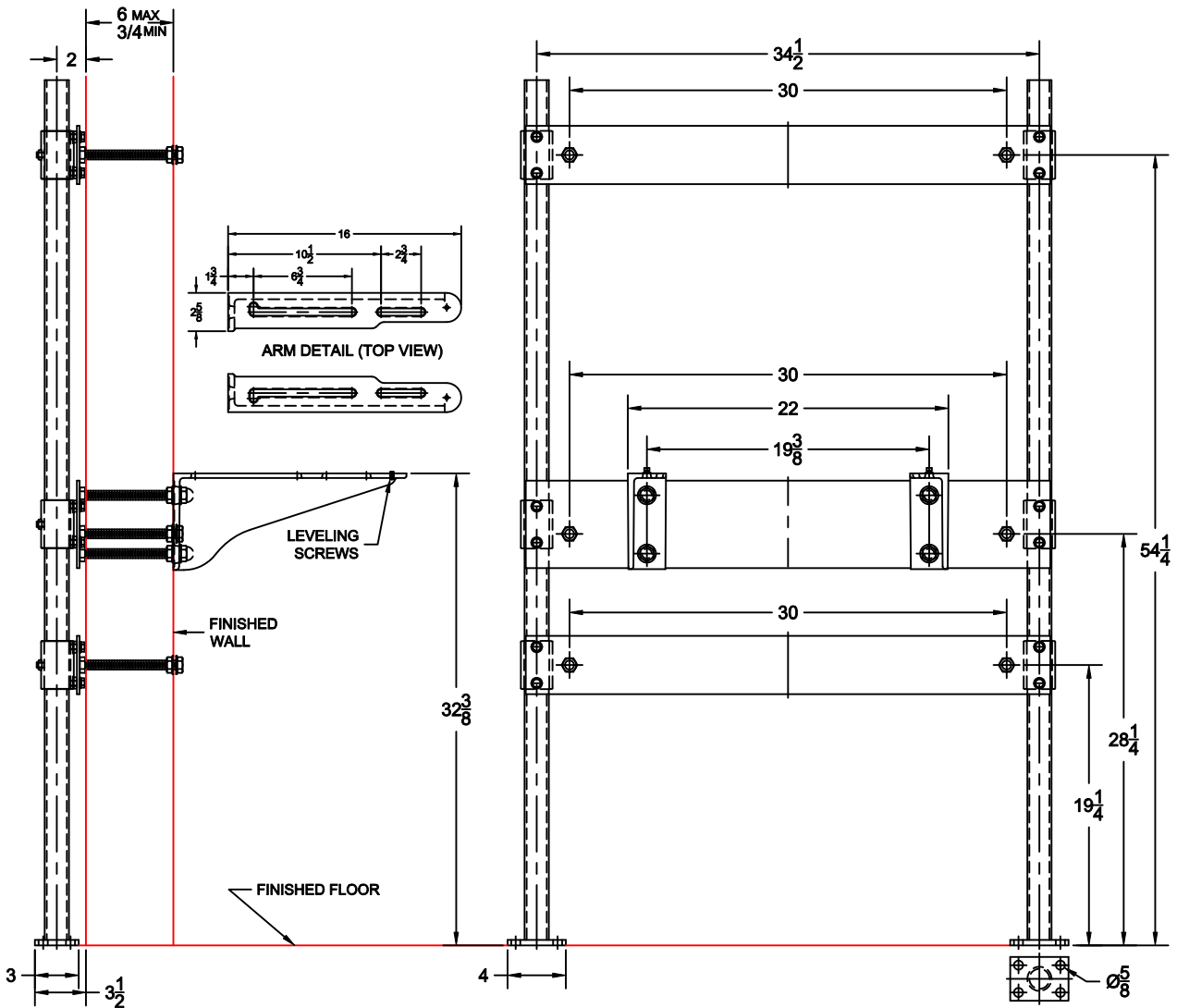
SINK CARRIER WITH PIPE UPRIGHTS, WELDED BASE FEET, A.R.E. HEAVY DUTY ARMS, HANGER SUPPORT PLATE & HARDWARE.

FIXTURE

Manufacturer Willoughby

Name \_\_\_\_\_ No. CSSS1

Style Wash Station



### OPTIONS

Cat. No.	Type	Wt. Lbs.	Suffix	Description
<input type="checkbox"/> 620-SC159	SGL	59.0	<input type="checkbox"/> M36	SQUARE UPRIGHTS

NOTE: CONTRACTOR MUST VERIFY DIMENSIONS WITH FIXTURE MANUFACTURER ROUGH-IN DATA  
 TYLER PIPE / WADE DIVISION ACCEPTS NO RESPONSIBILITY FOR ANY INACCURACIES IN DRAWING

AutoCad.dwg